

Ceiling and Wall

STILO



TARGETTI

STILO

Wall mounted Ceiling mounted

GENERAL INFO

Wall-mounted fixture.
282x80x184mm

LED

ASY and ELL optic: LED
Chip on board
NSP optic: LED Emitter
Effect optic: LED Multichip
Emitter
From 600lm to 6536lm
3000K – 4000K
Ra80

PRODUCT EFFICACY

Up to 112lm/W

OPTICS

NSP – Effect – Asym –
Elliptical

POWER SUPPLY

Electronic

MATERIAL

Anodized and painted
extruded aluminium body
and anodized and powder
coated die-cast aluminium
optical unit and terminal.
Tempered glass protective
screen.

ON DEMAND



Easy Custom Colour



110-277Vac
power supply



Cataphoresis
treatment

A range of products with the same design but with different installation characteristics: from architectural lighting of building facades and porticos right up to pedestrian walkways. Different needs and effects with a unique family feeling; wall mounted and ceiling mounted versions that produce a myriad of lighting effects, from purely graphic and defined effects to wider beams that fill large spaces.

On request it is possible to subject the product to “Cataphoresis” treatment making it suitable to be installed near the sea (up to 5 metres) or in saline environment or in the presence of corrosive agents.

The entire range uses the “Waterblock Plus” technical solution that involves resin coating the connection cables and completely resin coating the integrated driver limiting the risk of humidity reaching the fixture.



Outdoor



Plus



Available in two installation types

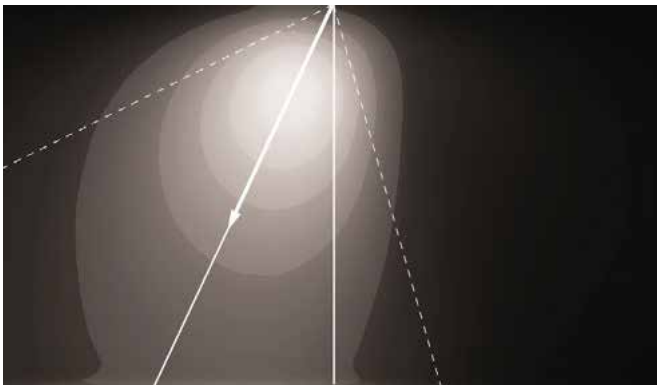
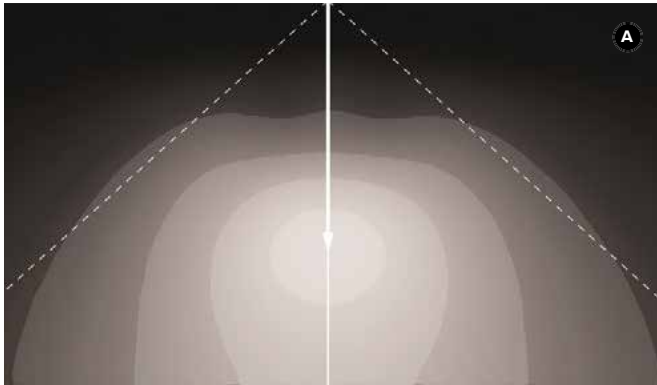
Flat (parallel to the wall) and Straight (perpendicular to the wall), both available in mono and bi-emission versions.

The ceiling mounted version

Are ideal to light porticos, the different optics make it possible to light pedestrian areas or vertical walls.



Outdoor



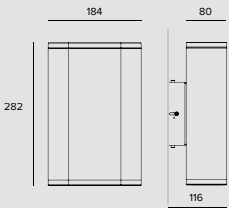
Stilo is available with four different optical solutions

- A** Elliptical emission
Using it like a grazing lighting is ideal to illuminate the building facades.
The ceiling mounted versions allows to light pedestrian areas in a particularly uniform way.
- B** Asymmetric emission
Installed for indirect emission to light arches and direct emission for pedestrian areas.
The ceiling mounted version can also be used to light walls.
- C** Superspot emission
Has a particularly concentrated and defined effect that is suitable for lighting a facade.
- D** Defined effects
Real light patterns on the wall from a blade light beam as thin as a pin, to wider, yet defined effects with beam angles of 30° and 90°.

STILO



Wall Flat



LED / 1x9W / NSP / MONO-EMISSION

	3000K	H(m)	D(m)	Emax(lx)
Ra80			9°	
Fixture Power	12W	1	0.16	13011
Source Flux	650lm	2	0.32	3253
Fixture Flux	531lm	3	0.48	1446
Efficacy	46lm/W	4	0.64	813
TS791	Imax=20017cd/klm	Imax	13011cd	5 0.80 520

Driver	Colour	3000K	4000K
EL.		1E2547	
EL.		1E2556	1E2881

LED / 1x11W / EFFECT / MONO-EMISSION

	3000K	H(m)	D1(m)	D2(m)	Emax(lx)
Ra80			68°	95°	
Fixture Power	15W	1	1.36	2.19	189
Source Flux	600lm	2	2.72	4.39	47
Fixture Flux	292lm	3	4.08	6.58	21
Efficacy	20lm/W	4	5.44	8.78	12
TS788	Imax=315cd/klm	Imax	189cd	5 6.80 10.97	8

Driver	Colour	3000K	4000K
EL.		1E2882	1E2883

LED / 2x9W / NSP-NSP / BI-EMISSION

	3000K	H(m)	D(m)	Emax(lx)
Ra80			9°	
Fixture Power	20W	1	0.16	13011
Source Flux	1300lm	2	0.32	3253
Fixture Flux	1062lm	3	0.48	1446
Efficacy	52lm/W	4	0.64	813
TS824	Imax=10009cd/klm	Imax	13011cd	5 0.80 520

Driver	Colour	3000K	4000K
EL.		1E2551	
EL.		1E2560	1E2887

LED / 2x11W / EFFECT-EFFECT / BI-EMISSION

	3000K	H(m)	D1(m)	D2(m)	Emax(lx)
Ra80			68°	95°	
Fixture Power	27W	1	1.36	2.19	189
Source Flux	1200lm	2	2.72	4.39	47
Fixture Flux	584lm	3	4.08	6.58	21
Efficacy	22lm/W	4	5.44	8.78	12
TS814	Imax=157cd/klm	Imax	189cd	5 6.80 10.97	8

Driver	Colour	3000K	4000K
EL.		1E2888	1E2889

LED / 1x21W / ASYM / MONO-EMISSION

	3000K	H(m)	D1(m)	D2(m)	Emax(lx)
Ra80			61°	86°	
Fixture Power	23W	1	1.51	1.98	1354
Source Flux	3187lm	2	3.01	3.96	339
Fixture Flux	2304lm	3	4.52	5.94	150
Efficacy	100lm/W	4	6.02	7.91	85
TS787	Imax=464cd/klm	Imax	1480cd	5 7.53 9.89	54

Driver	Colour	3000K	4000K
EL.		1E2543	
EL.		1E2552	1E2877

Outdoor

STILO

LED / 1x21W / ELLIPTICAL / MONO-EMISSION



	3000K	H(m)	D1(m)	D2(m)	Emax(lx)
Ra80		42°	79°		
Fixture Power	23W	1	0.76	1.66	2266
Source Flux	3187lm	2	1.52	3.31	567
Fixture Flux	2530lm	3	2.28	4.97	252
Efficacy	110lm/W	4	3.04	6.62	142
TS786	Imax=711cd/klm	Imax	2266cd	5	3.80 8.28 91

Driver	Colour	3000K	4000K
EL.		1E2545	
EL.		1E2554	1E2879

LED / 1x33W / ASYM / MONO-EMISSION



	3000K	H(m)	D1(m)	D2(m)	Emax(lx)
Ra80		61°	86°		
Fixture Power	36W	1	1.51	1.98	1859
Source Flux	4373lm	2	3.01	3.96	465
Fixture Flux	3162lm	3	4.52	5.94	207
Efficacy	89lm/W	4	6.02	7.91	116
TS787	Imax=464cd/klm	Imax	2031cd	5	7.53 9.89 74

Driver	Colour	3000K	4000K
EL.		1E2544	
EL.		1E2553	1E2878

LED / 1x33W / ELLIPTICAL / MONO-EMISSION



	3000K	H(m)	D1(m)	D2(m)	Emax(lx)
Ra80		42°	79°		
Fixture Power	36W	1	0.76	1.66	3110
Source Flux	4373lm	2	1.52	3.31	777
Fixture Flux	3471lm	3	2.28	4.97	346
Efficacy	97lm/W	4	3.04	6.62	194
TS786	Imax=711cd/klm	Imax	3110cd	5	3.80 8.28 124

Driver	Colour	3000K	4000K
EL.		1E2546	
EL.		1E2555	1E2880

LED / 2x21W / ASYM-ASYM / BI-EMISSION



	3000K	H(m)	D1(m)	D2(m)	Emax(lx)
Ra80		61°	86°		
Fixture Power	46W	1	1.51	1.98	1355
Source Flux	6375lm	2	3.01	3.96	339
Fixture Flux	4609lm	3	4.52	5.94	151
Efficacy	100lm/W	4	6.02	7.91	85
TS830	Imax=232cd/klm	Imax	1480cd	5	7.53 9.89 54

Driver	Colour	3000K	4000K
EL.		1E2548	
EL.		1E2557	1E2884

LED / 2x21W / ELLIPTICAL-ELLIPTICAL / BI-EMISSION



	3000K	H(m)	D1(m)	D2(m)	Emax(lx)
Ra80		42°	79°		
Fixture Power	46W	1	0.76	1.66	2267
Source Flux	6375lm	2	1.52	3.31	567
Fixture Flux	5060lm	3	2.28	4.97	252
Efficacy	109lm/W	4	3.04	6.62	142
TS829	Imax=356cd/klm	Imax	2267cd	5	3.80 8.28 91

Driver	Colour	3000K	4000K
EL.		1E2549	
EL.		1E2558	1E2885

LED / 2x21W / ELLIPTICAL-ASYM / BI-EMISSION



	3000K	H(m)	D1(m)	D2(m)	Emax(lx)
Ra80		42°	79°		
Fixture Power	46W	1	0.76	1.66	2267
Source Flux	6375lm	2	1.52	3.31	567
Fixture Flux	4835lm	3	2.28	4.97	252
Efficacy	104lm/W	4	3.04	6.62	142
TS831	Imax=356cd/klm	Imax	2267cd	5	3.80 8.28 91

Driver	Colour	3000K	4000K
EL.		1E2550	
EL.		1E2559	1E2886

Note

EFFECT Version: the fixture comes equipped with a 90° beam aperture. The beam can be shaped using shutter accessories.

STILO

Accessories

Filter



Filter	Code
Red	1E3035
Green	1E3036
Blue	1E3037
Yellow	1E3038
Magenta	1E3039

Chromatic coloured PMMA filter, anodised powder coated frame (ferrite).
NSP, EFFECT, ASYM, ELLIPTICAL



Colour	Code
	1E2575
	1E2576

Blade of light filter.
PMMA holographic filter for a blade of light effect, CNC machine anodised and powder coated aluminium frame.
To be used with NSP optics.



Colour	Code
	1E2577
	1E2578

Anti-glare.
PMMA holographic filter to reduce the beam angle, CNC machine anodised and powder coated aluminium frame.
To be used with NSP, ASYM and ELLIPTICAL optics.

Shaper



Code
1E2901

30° shutter.
Powder coated stainless steel plate (ferrite).
EFFECT



Code
1E2902

Blade effect shutter.
PMMA plano convex cylindrical lens and powder coated stainless steel plate (ferrite).
EFFECT

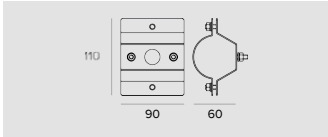
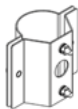
Screen



Colour	Code
	1E2579
	1E2580

Asymmetric screen.
Powder coated stainless steel.
To be used with NSP, EFFECT and ELLIPTICAL optics.

Mounting System



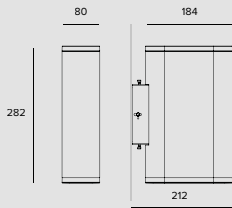
Code
1E2906

Pole (Ø60mm) installation bracket.
Powder coated stainless steel.
NSP, ASYM, ELLIPTICAL

Outdoor



Wall Straight



LED / 1x9W / NSP / MONO-EMISSION

	3000K	H(m)	D(m)	E _{max} (lx)
Ra80			10°	
Fixture Power	12W	1	0.17	13011
Source Flux	650lm	2	0.33	3253
Fixture Flux	531lm	3	0.50	1446
Efficacy	46lm/W	4	0.67	813
TS791	I _{max} =20017cd/klm	I _{max}	13011cd	520

Driver	Colour	3000K	4000K
EL.		1E2894	1E2895

LED / 1x21W / ELLIPTICAL / MONO-EMISSION

	3000K	H(m)	D1(m)	D2(m)	E _{max} (lx)
Ra80			79°	42°	
Fixture Power	23W	1	1.66	0.76	2266
Source Flux	3187lm	2	3.31	1.52	567
Fixture Flux	2530lm	3	4.97	2.28	252
Efficacy	110lm/W	4	6.62	3.04	142
TS786	I _{max} =711cd/klm	I _{max}	2266cd	5	8.28

Driver	Colour	3000K	4000K
EL.		1E2890	1E2891

LED / 1x33W / ELLIPTICAL / MONO-EMISSION

	3000K	H(m)	D1(m)	D2(m)	E _{max} (lx)
Ra80			79°	42°	
Fixture Power	36W	1	1.66	0.76	3110
Source Flux	4373lm	2	3.31	1.52	777
Fixture Flux	3471lm	3	4.97	2.28	346
Efficacy	97lm/W	4	6.62	3.04	194
TS786	I _{max} =711cd/klm	I _{max}	3110cd	5	8.28

Driver	Colour	3000K	4000K
EL.		1E2892	1E2893

LED / 2x9W / NSP-NSP / BI-EMISSION

	3000K	H(m)	D(m)	E _{max} (lx)
Ra80			10°	
Fixture Power	20W	1	0.17	13011
Source Flux	1300lm	2	0.33	3253
Fixture Flux	1062lm	3	0.50	1446
Efficacy	52lm/W	4	0.67	813
TS824	I _{max} =10009cd/klm	I _{max}	13011cd	520

Driver	Colour	3000K	4000K
EL.		1E2898	1E2899

LED / 2x21W / ELLIPTICAL-ELLIPTICAL / BI-EMISSION

	3000K	H(m)	D1(m)	D2(m)	E _{max} (lx)
Ra80			79°	42°	
Fixture Power	46W	1	1.66	0.76	2267
Source Flux	6375lm	2	3.31	1.52	567
Fixture Flux	5060lm	3	4.97	2.28	252
Efficacy	109lm/W	4	6.62	3.04	142
TS829	I _{max} =356cd/klm	I _{max}	2267cd	5	8.28

Driver	Colour	3000K	4000K
EL.		1E2896	1E2897

STILO

Accessories

Filter



Filter	Code
Red	1E3035
Green	1E3036
Blue	1E3037
Yellow	1E3038
Magenta	1E3039

Chromatic coloured PMMA filter, anodised powder coated frame (ferrite).
NSP, EFFECT, ASYM, ELLIPTICAL



Colour	Code
	1E2576

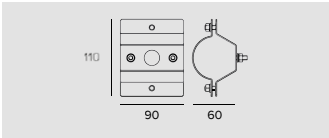
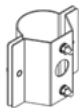
Blade of light filter.
PMMA holographic filter for a blade of light effect, CNC machine anodised and powder coated aluminium frame.
To be used with NSP optics.



Colour	Code
	1E2578

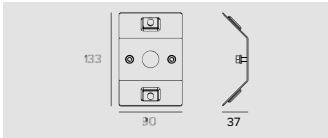
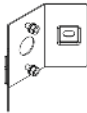
Anti-glare.
PMMA holographic filter to reduce the beam angle, CNC machine anodised and powder coated aluminium frame.
To be used with NSP, ASYM and ELLIPTICAL optics.

Mounting System



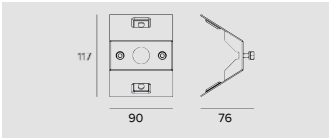
Code
1E2906

Pole (Ø60mm) installation bracket.
Powder coated stainless steel.
NSP, ASYM, ELLIPTICAL



Code
1E2907

Bracket for corner installation.
Powder coated stainless steel.
NSP, ELLIPTICAL



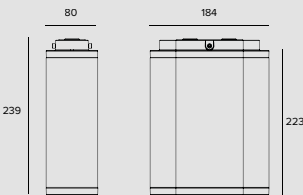
Code
1E2900

Bracket for edge installation.
Powder coated stainless steel.
NSP, ELLIPTICAL

STILO



Ceiling



LED / 9W / NSP

	3000K	H(m)	D(m)	E _{max} (lx)
Ra80			9°	
Fixture Power	12W	1	0.16	13011
Source Flux	650lm	2	0.32	3253
Fixture Flux	531lm	3	0.48	1446
Efficacy	46lm/W	4	0.64	813
TS791	I _{max} =20017cd/klm	I _{max}	13011cd	520

Driver	Colour	3000K	4000K
EL.	●	1E2875	1E2876

LED / 21W / ASYM

	3000K	H(m)	D1(m)	D2(m)	E _{max} (lx)
Ra80			61°	86°	
Fixture Power	23W	1	1.51	1.98	1354
Source Flux	3187lm	2	3.01	3.96	339
Fixture Flux	2304lm	3	4.52	5.94	150
Efficacy	100lm/W	4	6.02	7.91	85
TS787	I _{max} =464cd/klm	I _{max}	1480cd	5	7.53

Driver	Colour	3000K	4000K
EL.	●	1E2871	1E2872

LED / 21W / ELLIPTICAL

	3000K	H(m)	D1(m)	D2(m)	E _{max} (lx)
Ra80			42°	79°	
Fixture Power	23W	1	0.76	1.66	2266
Source Flux	3187lm	2	1.52	3.31	567
Fixture Flux	2530lm	3	2.28	4.97	252
Efficacy	110lm/W	4	3.04	6.62	142
TS786	I _{max} =711cd/klm	I _{max}	2266cd	5	3.80

Driver	Colour	3000K	4000K
EL.	●	1E2867	1E2868

LED / 33W / ASYM

	3000K	H(m)	D1(m)	D2(m)	E _{max} (lx)
Ra80			61°	86°	
Fixture Power	36W	1	1.51	1.98	1859
Source Flux	4373lm	2	3.01	3.96	465
Fixture Flux	3162lm	3	4.52	5.94	207
Efficacy	89lm/W	4	6.02	7.91	116
TS787	I _{max} =464cd/klm	I _{max}	2031cd	5	7.53

Driver	Colour	3000K	4000K
EL.	●	1E2873	1E2874

LED / 33W / ELLIPTICAL

	3000K	H(m)	D1(m)	D2(m)	E _{max} (lx)
Ra80			42°	79°	
Fixture Power	36W	1	0.76	1.66	3110
Source Flux	4373lm	2	1.52	3.31	777
Fixture Flux	3471lm	3	2.28	4.97	346
Efficacy	97lm/W	4	3.04	6.62	194
TS786	I _{max} =711cd/klm	I _{max}	3110cd	5	3.80

Driver	Colour	3000K	4000K
EL.	●	1E2869	1E2870

STILO

Accessories

Filter



Filter	Code
Red	1E3035
Green	1E3036
Blue	1E3037
Yellow	1E3038
Magenta	1E3039

Chromatic coloured PMMA filter, anodised powder coated frame (ferrite).
NSP, EFFECT, ASYM, ELLIPTICAL



Colour	Code
	1E2576

Blade of light filter.
PMMA holographic filter for a blade of light effect, CNC machine anodised and powder coated aluminium frame.
To be used with NSP optics.



Colour	Code
	1E2578

Anti-glare.
PMMA holographic filter to reduce the beam angle, CNC machine anodised and powder coated aluminium frame.
To be used with NSP, ASYM and ELLIPTICAL optics.

Screen



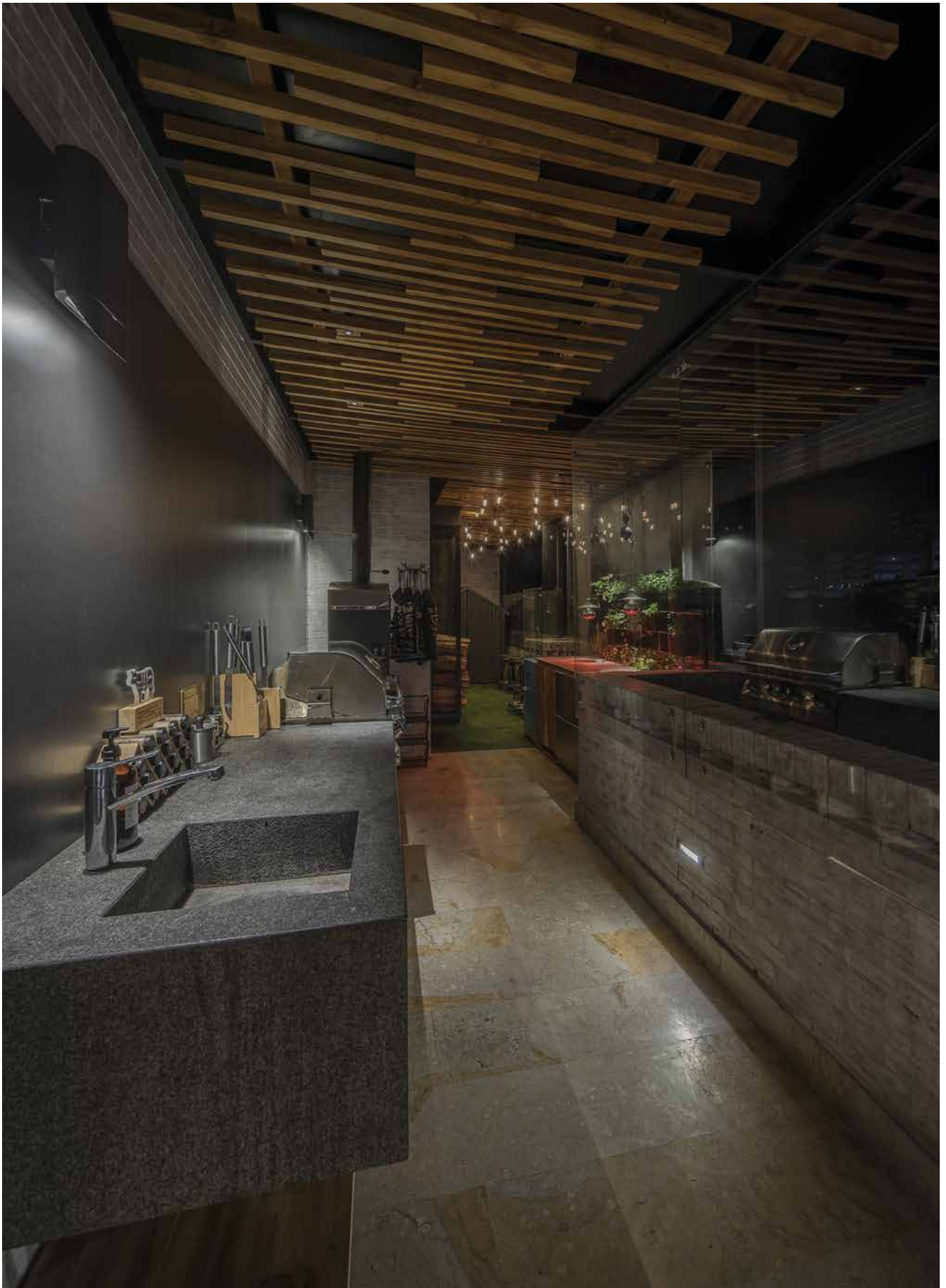
Colour	Code
	1E2580

Asymmetric screen.
Powder coated stainless steel.
To be used with NSP, EFFECT and ELLIPTICAL optics.

Private Residence
Bogotá, Colombia

Architect Helmer Junco
Photographer Sebastián Franco

Engineer Schaller Tech Team
Lighting Design Gregory Schaller, Jeins Tinoco



Ceiling and Wall

Requisites and information

All fixtures of the Targetti collection have been designed and produced to comply with European Standard EN60598-1 relative to the safety requisite of light fixtures.



All fixtures comply with the following directives:

- EMC Directive 2014/30/EU
- LV Directive 2014/35/EU
- RoHS Directive 2011/65/EU

Unless specified otherwise

- all fixtures are supplied without lamps;
- all fixtures are sold separately;
- all measurements are expressed in millimeters;
- all fixtures at low voltage are supplied without transformer;
- For products in Class III performance is only guaranteed using the electronic power supplies and drivers indicated in the catalogue.

Consorzio ecolight

Targetti Sankey Spa is a member of the Ecolight consortium that was set up in 2004 (D.Lgs. 49/2014) to comply with the provisions of the European Directive that was adopted in Italy as the European Directive 2012/19/EU for WEEE on managing, recovering and treating waste electrical and electronic equipment, used batteries and accumulators in compliance with all applicable legislation.

The colors of the products illustrated are reproduced as faithfully as possible compatibly with the technical limitations of the printed medium. The company reserves the right to make changes to the production without notice. Reproduction of this catalogue or any part of it is prohibited. The products illustrated in this catalogue are covered by one or more Italian or international patents. The company will take legal action against any imitators.



TARGETTI SANKEY SpA

Certificated ISO 9001 n° 9130. TAR1
Certificated ISO 14001 n° IT319206

The Enec mark, ISO9001 and ISO14001 certifications and the CE marking all guarantee that the activities carried out internally in the company are governed and controlled by procedures which assure constant level of quality.

Accredited laboratory in accordance with ISO 17025.

Light beam apertures

from	to	beam	
5°	10°	Narrow Spot	NSP
11°	25°	Spot	SP
26°	40°	Flood	FL
41°	50°	Medium Wide Flood	MWFL
51°	70°	Wide Flood	WFL
71°	120°	Very Wide Flood	VWFL
		Wall Washer	WW
		Narrow Asymmetric	N. ASYM
		Asymmetric	ASYM

Icons legend

	Class I luminaire in which the protection against electrical shock is guaranteed by the connections of the conductive elements accessible to a protective conductor (earth connection).
	Luminaire in which the connection to a protective conductor (earth connection) guarantees the immunity to radio noises.
	Class II luminaire (double insulation), protected against the accidental contact with parts under tension from the user.
	Class III luminaire, suitable for connection to very low voltage circuits.
	Solid particle and liquid ingress protection degree.
	Protection degree - Recessed part . Protection degree - Exposed part.
	Impact protection degree.
	ENEC European Norms Electrical Certification.

Particular symbols

	Weight of the single fixture.
	Cable length.
	Walk-over.
	Driver-over safe.
	Fixtures that have parameters below the minimum visibility threshold $PstLM \leq 1$ and $SVM \leq 0.4$ (IEC TR 61547-1 and IEC TR 63158).
DBS	Dynamic Beam Shaper optical technology with remote management of the beam opening.
	LED with $Ra_{__}$ where not present in the catalogue, available on request.
	Different colour temperatures available on request.
	Custom finish of your choice from the Targetti Colours range and RAL indicated in the colour chart can be downloaded on line from the download section.
	Treatment carried out on request.
	Supplied on request with an integrated or remote 110-277Vac power supply as indicated for the standard model.
	LED version with a different "Tunable White" tone available on request.

Note

- ➔ Please contact us for on demand treatments and versions.
- ➔ The performances reported on the products refer to the use of the recommended drivers.
- ➔ The drivers selected by Targetti make the fixtures "Safe Flicker".

