

Projectors

**JEDI**



**TARGETTI**

# JEDI

## Projector

### GENERAL INFO

Adjustable linear projector.  
Lengths 616mm – 916mm  
– 1216mm

### LED

Optics FL, GR, WW - Linear boards  
Optic SP - LED Emitter  
Version RGBW - LED Emitter  
From 632lm to 7180lm  
3000K – 4000K  
Ra80  
RGBW

### PRODUCT EFFICACY

Up to 117lm/W

### OTTICHE

SP – FL – Grazing –  
Wall Washer

### POWER SUPPLY

Electronic – DALI

### MATERIAL

Extruded anodised aluminium body.  
Extra clear glass flat screen.  
Black polycarbonate driver box.

### ON DEMAND

⚡ 110-277Vac  
power supply  
(Jedi RGBW)

⊗ 2700K - 3500K

A coordinated range of linear projectors for lighting wide surfaces. The multiplicity of effects, installation flexibility, three different lengths and the possibility to camouflage them into the architecture make them fundamental tools for lighting large surfaces.

The accessory fixing system allows the projector to be adjusted with aim locking.

Completely sealed housing complete - external electrical connection through IP68 connectors.

Also available Inground and RGBW versions.

The entire range uses the “Waterblock Smart” technical solution that involves resin coating the connection cables limiting the risk of humidity reaching the driver or the fixture.



Outdoor



## Four different effects

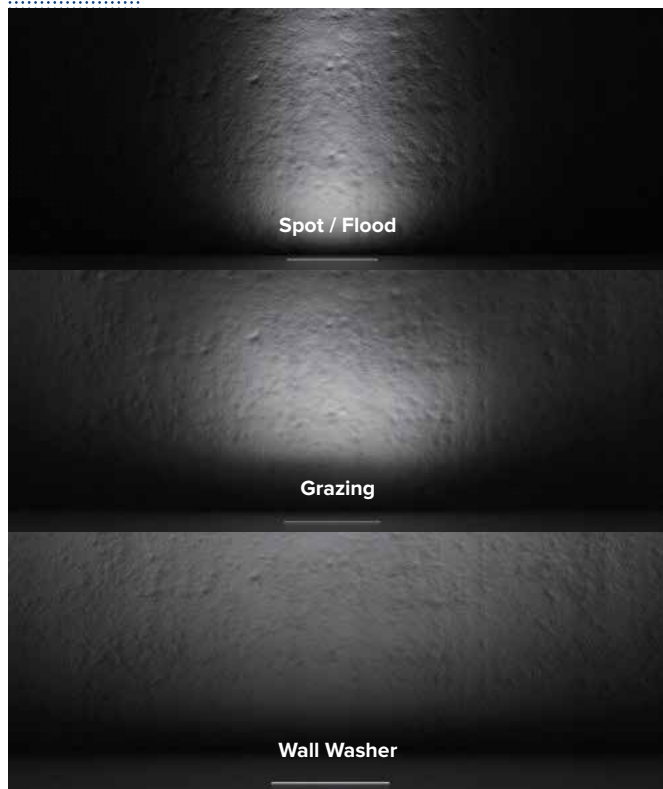
Spot and Flood optics to obtain more concentrated, precise lighting.

Grazing Optic for a grazing, uniform light effect for installation near to the wall to be illuminated.

Wall Washer Optic for a completely homogeneous effect on the wall, thus avoiding any bright stripes or separate beams that are typical of linear fixtures that are fitted with visible LED strips.

## The different lengths have proportioned lumen packets to suit each one

The different lengths have proportioned lumen packets to suit each one. The same quantity of light per linear metre makes it possible to light every surface in a uniform way irrespective of the length of the fixture used.





## Projector L. 616mm



### LED / 23W / SPOT



3000K	H(m)	D(m)	E <sub>max</sub> (lx)
Ra80	10°		
Fixture Power	28W	1	0.18
Source Flux	1947lm	2	0.37
Fixture Flux	1560lm	3	0.55
Efficacy	56lm/W	4	0.73
TS889	Imax=16539cd/klm	Imax	32201cd
		5	0.92

Driver	Colour	3000K	4000K
EL.	●	<b>1E2653</b>	<b>1E2654</b>
DALI	●	<b>1E2655</b>	<b>1E2656</b>

### LED / 12W / FLOOD



3000K	H(m)	D1(m)	D2(m)	E <sub>max</sub> (lx)
Ra80	32°	85°		
Fixture Power	15W	1	0.57	1.84
Source Flux	1720lm	2	1.14	3.68
Fixture Flux	1285lm	3	1.70	5.53
Efficacy	86lm/W	4	2.27	7.37
TS886	Imax=699cd/klm	Imax	1203cd	5
			2.84	9.21

Driver	Colour	3000K	4000K
EL.	●	<b>1E2605</b>	<b>1E2606</b>
DALI	●	<b>1E2607</b>	<b>1E2608</b>

### LED / 24W / FLOOD



3000K	H(m)	D1(m)	D2(m)	E <sub>max</sub> (lx)
Ra80	32°	85°		
Fixture Power	28W	1	0.57	1.84
Source Flux	3420lm	2	1.14	3.68
Fixture Flux	2555lm	3	1.70	5.53
Efficacy	91lm/W	4	2.27	7.37
TS885	Imax=699cd/klm	Imax	2392cd	5
			2.84	9.21

Driver	Colour	3000K	4000K
EL.	●	<b>1E2609</b>	<b>1E2610</b>
DALI	●	<b>1E2611</b>	<b>1E2612</b>

### LED / 12W / WALL WASHER



3000K	H(m)	D1(m)	D2(m)	E <sub>max</sub> (lx)
Ra80	28°	78°		
Fixture Power	15W	1	0.55	1.70
Source Flux	1720lm	2	1.11	3.40
Fixture Flux	1293lm	3	1.66	5.10
Efficacy	86lm/W	4	2.22	6.79
TS884	Imax=774cd/klm	Imax	1331cd	5
			2.77	8.49

Driver	Colour	3000K	4000K
EL.	●	<b>1E2629</b>	<b>1E2630</b>
DALI	●	<b>1E2631</b>	<b>1E2632</b>

### LED / 24W / WALL WASHER



3000K	H(m)	D1(m)	D2(m)	E <sub>max</sub> (lx)
Ra80	28°	78°		
Fixture Power	28W	1	0.55	1.70
Source Flux	3420lm	2	1.11	3.40
Fixture Flux	2572lm	3	1.66	5.10
Efficacy	92lm/W	4	2.22	6.79
TS883	Imax=774cd/klm	Imax	2646cd	5
			2.77	8.49

Driver	Colour	3000K	4000K
EL.	●	<b>1E2633</b>	<b>1E2634</b>
DALI	●	<b>1E2635</b>	<b>1E2636</b>



# JEDI

## LED / 18W / WALL WASHER

	3000K	H(m)	D1(m)	D2(m)	Emax(lx)
Ra80		28°	78°		
Fixture Power	22W	1	0.55	1.70	1733
Source Flux	2580lm	2	1.11	3.40	433
Fixture Flux	1940lm	3	1.66	5.10	193
Efficacy	88lm/W	4	2.22	6.79	108
TS884	Imax=774cd/klm	Imax	1996cd	5	2.77 8.49 69

Driver	Colour	3000K	4000K
EL.	●	<b>1E2637</b>	<b>1E2638</b>
DALI	●	<b>1E2639</b>	<b>1E2640</b>

## LED / 36W / WALL WASHER

	3000K	H(m)	D1(m)	D2(m)	Emax(lx)
Ra80		28°	78°		
Fixture Power	40W	1	0.55	1.70	3445
Source Flux	5130lm	2	1.11	3.40	861
Fixture Flux	3858lm	3	1.66	5.10	383
Efficacy	96lm/W	4	2.22	6.79	215
TS883	Imax=774cd/klm	Imax	3969cd	5	2.77 8.49 138

Driver	Colour	3000K	4000K
EL.	●	<b>1E2641</b>	<b>1E2642</b>
DALI	●	<b>1E2643</b>	<b>1E2644</b>

## LED / 18W / GRAZING

	3000K	H(m)	D1(m)	D2(m)	Emax(lx)
Ra80		15°	76°		
Fixture Power	22W	1	0.26	1.55	4130
Source Flux	2580lm	2	0.51	3.10	1032
Fixture Flux	2222lm	3	0.77	4.65	459
Efficacy	101lm/W	4	1.02	6.20	258
TS888	Imax=1601cd/klm	Imax	4130cd	5	1.28 7.76 165

Driver	Colour	3000K	4000K
EL.	●	<b>1E2589</b>	<b>1E2590</b>
DALI	●	<b>1E2591</b>	<b>1E2592</b>

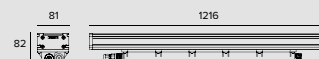
## LED / 36W / GRAZING

	3000K	H(m)	D1(m)	D2(m)	Emax(lx)
Ra80		15°	76°		
Fixture Power	40W	1	0.26	1.55	8211
Source Flux	5130lm	2	0.51	3.10	2053
Fixture Flux	4441lm	3	0.77	4.65	912
Efficacy	111lm/W	4	1.02	6.21	513
TS887	Imax=1601cd/klm	Imax	8211cd	5	1.28 7.76 328

Driver	Colour	3000K	4000K
EL.	●	<b>1E2593</b>	<b>1E2594</b>
DALI	●	<b>1E2595</b>	<b>1E2596</b>



## Projector L. 1216mm



## LED / 46W / SPOT

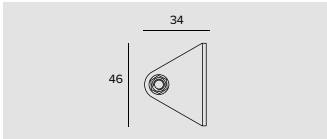
	3000K	H(m)	D(m)	Emax(lx)		
	Ra80			10°		
	Fixture Power	51W	1	0.18	64401	
	Source Flux	3894lm	2	0.37	16100	
	Fixture Flux	3120lm	3	0.55	7156	
	Efficacy	61lm/W	4	0.73	4025	
	TS889	Imax=16539cd/klm	Imax	64401cd	5	0.92

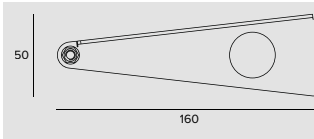
Driver	Colour	3000K	4000K
EL.	●	<b>1E2661</b>	<b>1E2662</b>
DALI	●	<b>1E2663</b>	<b>1E2664</b>

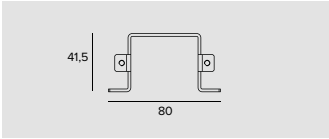


# JEDI


## Related codes

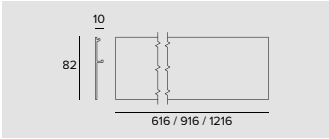
Mounting System			
	<table><tr><th>Code</th></tr><tr><td><b>1E2752</b></td></tr></table>	Code	<b>1E2752</b>
Code			
<b>1E2752</b>			
Short bracket for wall installation (2 pieces).			

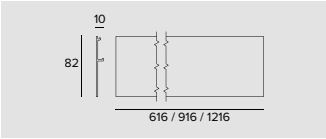
	<table><tr><th>Code</th></tr><tr><td><b>1E2753</b></td></tr></table>	Code	<b>1E2753</b>
Code			
<b>1E2753</b>			
Long bracket for wall installation (2 pieces).			


Code
<b>1E2754</b>
Bracket for ceiling installation (2 pieces).

## Accessories

End Caps

Code
<b>1E2761</b>
End cap.

Cover Panel									
	<table><tr><th>L</th><th>Code</th></tr><tr><td>616</td><td><b>1E3045</b></td></tr><tr><td>916</td><td><b>1E3046</b></td></tr><tr><td>1216</td><td><b>1E3047</b></td></tr></table>	L	Code	616	<b>1E3045</b>	916	<b>1E3046</b>	1216	<b>1E3047</b>
L	Code								
616	<b>1E3045</b>								
916	<b>1E3046</b>								
1216	<b>1E3047</b>								
Side cover for ceiling installation.									

	<table><tr><th>L</th><th>Code</th></tr><tr><td>616</td><td><b>1E2755</b></td></tr><tr><td>916</td><td><b>1E2756</b></td></tr><tr><td>1216</td><td><b>1E2757</b></td></tr></table>	L	Code	616	<b>1E2755</b>	916	<b>1E2756</b>	1216	<b>1E2757</b>
L	Code								
616	<b>1E2755</b>								
916	<b>1E2756</b>								
1216	<b>1E2757</b>								
Side cover for wall/cornice installation.									

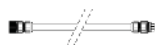
	L	Code
	616	<b>1E2758</b>
	916	<b>1E2759</b>
	1216	<b>1E2760</b>

Anti-glare side cover.

## Outdoor



Cable



	L	Code
	320	<b>1E2762</b>
	470	<b>1E2763</b>
	620	<b>1E2764</b>
	770	<b>1E2765</b>

Connection cable.  
Complete with 5 pole connectors.  
For the electronic and DALI version.  
**1E2762** - For in line adjacent connection of one 600mm projector with one 900mm projector.  
**1E2763** - For in line adjacent connection of one 600mm projector with one 1200mm projector or two 900mm projectors.  
**1E2764** - For in line adjacent connection of one 900mm projector with one 1200mm projector.  
**1E2765** - For in line adjacent connection of two 1200mm projectors.

Connector



Code
<b>1E2769</b>

Linear connection box IP66/IP68.  
5 poles max. wire section 1.5mm<sup>2</sup>.  
Cable diameter range from 7 to 12mm.

Control systems



Code
<b>1E3048</b>

A IP67 Module for individual control of external devices equipped with DALI drivers.  
The module needs to be positioned in order to receive radio signals.  
The distance to the lighting fixtures can reach up to 50m.  
Wireless control via the Casambi application.  
LxHxP=56.5x22.3x35.8mm.

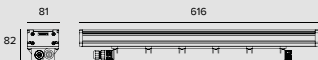


Code
<b>1E3049</b>

IP67 Extender for wireless control of DALI fixtures.  
It generates a local DALI bus with the capacity to drive up to 64 fixtures.  
Can control DALI fixtures in outdoor applications via the Casambi application.  
LxHxP=150x40x148mm.



Projector RGBW  
L. 616mm



LED RGBW / 17W 4Ch / SPOT

		H(m)	D(m)	Emax(lx)
			11°	
Fixture Power	20W	1	0.19	14937
Source Flux	860lm	2	0.38	3734
Fixture Flux	860lm	3	0.56	1660
Efficacy	43lm/W	4	0.75	934
TS1030	Imax=17366cd/klm	Imax	14937cd	597

Driver	Colour	RGBW
EL. DMX		1E3112

LED RGBW / 17W 4Ch / FLOOD

		H(m)	D1(m)	D2(m)	Emax(lx)
			85°	29°	
Fixture Power	20W	1	1.82	0.52	656
Source Flux	632lm	2	3.65	1.04	164
Fixture Flux	632lm	3	5.47	1.56	73
Efficacy	32lm/W	4	7.29	2.08	41
TS1033	Imax=1038cd/klm	Imax	656cd	5 9.11	2.60 26

Driver	Colour	RGBW
EL. DMX		1E3113

LED RGBW / 17W 4Ch / WALL WASHER

		H(m)	D1(m)	D2(m)	Emax(lx)
			115°	55°	
Fixture Power	20W	1	3.17	1.18	669
Source Flux	675lm	2	6.33	2.36	167
Fixture Flux	675lm	3	9.50	3.55	74
Efficacy	34lm/W	4	12.67	4.73	42
TS1036	Imax=1163cd/klm	Imax	786cd	5 15.83	5.91 27

Driver	Colour	RGBW
EL. DMX		1E3114

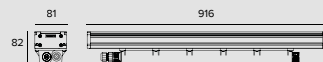
LED RGBW / 17W 4Ch / GRAZING

		H(m)	D1(m)	D2(m)	Emax(lx)
			73°	11°	
Fixture Power	20W	1	1.48	0.19	1665
Source Flux	740lm	2	2.97	0.38	416
Fixture Flux	740lm	3	4.45	0.57	185
Efficacy	37lm/W	4	5.94	0.76	104
TS1029	Imax=2250cd/klm	Imax	1665cd	5 7.42	0.96 67

Driver	Colour	RGBW
EL. DMX		1E3111



# Projector RGBW L. 916mm



## LED RGBW / 26W 4Ch / SPOT

	-	H(m)	D(m)	E <sub>max</sub> (lx)
	-	-	11°	-
	Fixture Power	31W	1	0.19 22404
	Source Flux	1290lm	2	0.38 5601
	Fixture Flux	1290lm	3	0.56 2489
	Efficacy	42lm/W	4	0.75 1400

TS1031	I <sub>max</sub> =17366cd/klm	I <sub>max</sub>	22404cd	5	0.94	896
--------	-------------------------------	------------------	---------	---	------	-----

Driver	Colour	RGBW
EL. DMX		<b>1E3116</b>

## LED RGBW / 26W 4Ch / FLOOD

	-	H(m)	D1(m)	D2(m)	E <sub>max</sub> (lx)
	-	-	85°	29°	-
	Fixture Power	31W	1	1.82	0.52 984
	Source Flux	949lm	2	3.65	1.04 246
	Fixture Flux	949lm	3	5.47	1.56 109
	Efficacy	31lm/W	4	7.29	2.08 62

TS1034	I <sub>max</sub> =1038cd/klm	I <sub>max</sub>	984cd	5	9.11	2.60 39
--------	------------------------------	------------------	-------	---	------	---------

Driver	Colour	RGBW
EL. DMX		<b>1E3117</b>

## LED RGBW / 26W 4Ch / WALL WASHER

	-	H(m)	D1(m)	D2(m)	E <sub>max</sub> (lx)
	-	-	115°	55°	-
	Fixture Power	31W	1	3.17	1.18 1004
	Source Flux	1013lm	2	6.33	2.36 251
	Fixture Flux	1013lm	3	9.50	3.55 112
	Efficacy	33lm/W	4	12.67	4.73 63

TS1037	I <sub>max</sub> =1163cd/klm	I <sub>max</sub>	1179cd	5	15.83	5.91 40
--------	------------------------------	------------------	--------	---	-------	---------

Driver	Colour	RGBW
EL. DMX		<b>1E3118</b>

## LED RGBW / 26W 4Ch / GRAZING

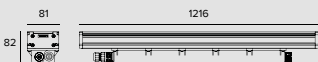
	-	H(m)	D1(m)	D2(m)	E <sub>max</sub> (lx)
	-	-	73°	11°	-
	Fixture Power	31W	1	1.48	0.19 2498
	Source Flux	1110lm	2	2.97	0.38 624
	Fixture Flux	1110lm	3	4.45	0.57 278
	Efficacy	36lm/W	4	5.94	0.76 156

TS1028	I <sub>max</sub> =2250cd/klm	I <sub>max</sub>	2498cd	5	7.42	0.96 100
--------	------------------------------	------------------	--------	---	------	----------

Driver	Colour	RGBW
EL. DMX		<b>1E3115</b>



Projector RGBW  
L. 1216mm



LED RGBW / 34W 4Ch / SPOT								
					Driver	Colour	RGBW	
					EL. DMX		1E3120	

		H(m)	D1(m)	D2(m)	Emax(lx)
		-	-	11°	-
Fixture Power	41W	1	0.19	29872	
Source Flux	1720lm	2	0.38	7468	
Fixture Flux	1720lm	3	0.56	3319	
Efficacy	42lm/W	4	0.75	1867	
TS1032	Imax=17366cd/klm	Imax	29872cd	5	0.94 1195

LED RGBW / 34W 4Ch / FLOOD								
					Driver	Colour	RGBW	
					EL. DMX		1E3121	

		H(m)	D1(m)	D2(m)	Emax(lx)
		-	-	85° 29°	-
Fixture Power	41W	1	1.82	0.52	1313
Source Flux	1265lm	2	3.65	1.04	328
Fixture Flux	1265lm	3	5.47	1.56	146
Efficacy	31lm/W	4	7.29	2.08	82
TS1035	Imax=1038cd/klm	Imax	1313cd	5	9.11 2.60 53

LED RGBW / 34W 4Ch / WALL WASHER								
					Driver	Colour	RGBW	
					EL. DMX		1E3122	

		H(m)	D1(m)	D2(m)	Emax(lx)
		-	-	115° 55°	-
Fixture Power	41W	1	3.17	1.18	1338
Source Flux	1351lm	2	6.33	2.36	335
Fixture Flux	1351lm	3	9.50	3.55	149
Efficacy	33lm/W	4	12.67	4.73	84
TS1038	Imax=1163cd/klm	Imax	1572cd	5	15.83 5.91 54

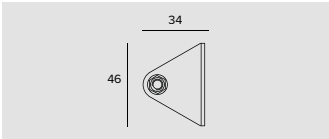
LED RGBW / 34W 4Ch / GRAZING								
					Driver	Colour	RGBW	
					EL. DMX		1E3119	

		H(m)	D1(m)	D2(m)	Emax(lx)
		-	-	73° 11°	-
Fixture Power	41W	1	1.48	0.19	3330
Source Flux	1480lm	2	2.97	0.38	833
Fixture Flux	1480lm	3	4.45	0.57	370
Efficacy	36lm/W	4	5.94	0.76	208
TS1027	Imax=2250cd/klm	Imax	3330cd	5	7.42 0.96 133

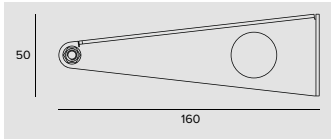
**Note**  
Photometrics show the maximum emission values of fixtures.

Related codes

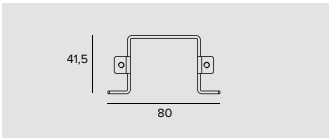
Mounting System



Code
1E2752
Short bracket for wall installation (2 pieces).



Code
1E2753
Long bracket for wall installation (2 pieces).



Code
1E2754
Bracket for ceiling installation (2 pieces).

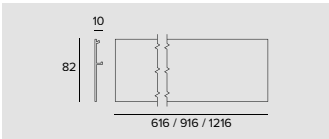
Accessories

End Caps

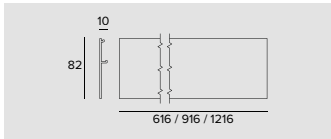


Code
1E2761
End cap.

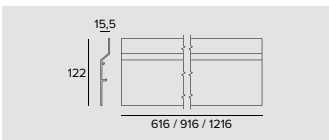
Cover Panel



	L	Code
	616	<b>1E3045</b>
	916	<b>1E3046</b>
	1216	<b>1E3047</b>
Side cover for ceiling installation.		



	L	Code
	616	<b>1E2755</b>
	916	<b>1E2756</b>
	1216	<b>1E2757</b>
Side cover for wall/cornice installation.		



	L	Code
	616	<b>1E2758</b>
	916	<b>1E2759</b>
	1216	<b>1E2760</b>
Anti-glare side cover.		

# JEDI

## Connector



Code
<b>1E2769</b>
Linear connection box IP66/IP68. 5 poles max. wire section 1.5mm <sup>2</sup> . Cable diameter range from 7 to 12mm.



Code
<b>1E3184</b>
IP68 4-way cable connector (5 pole).

## Control systems



Code
<b>1E2767</b>
USB-RDM Programmer code. DMX-RDM (Remote Device Management) address planner. Used with the "RDM Targetti" software that can be downloaded for free from the Targetti website download section. To be used with all RGBW products. The USB-RDM programmer manages to direct DMX-RDM fixtures if there are no BUFFER or Splitter DMXs on the section. Please refer to the instructions for more details.



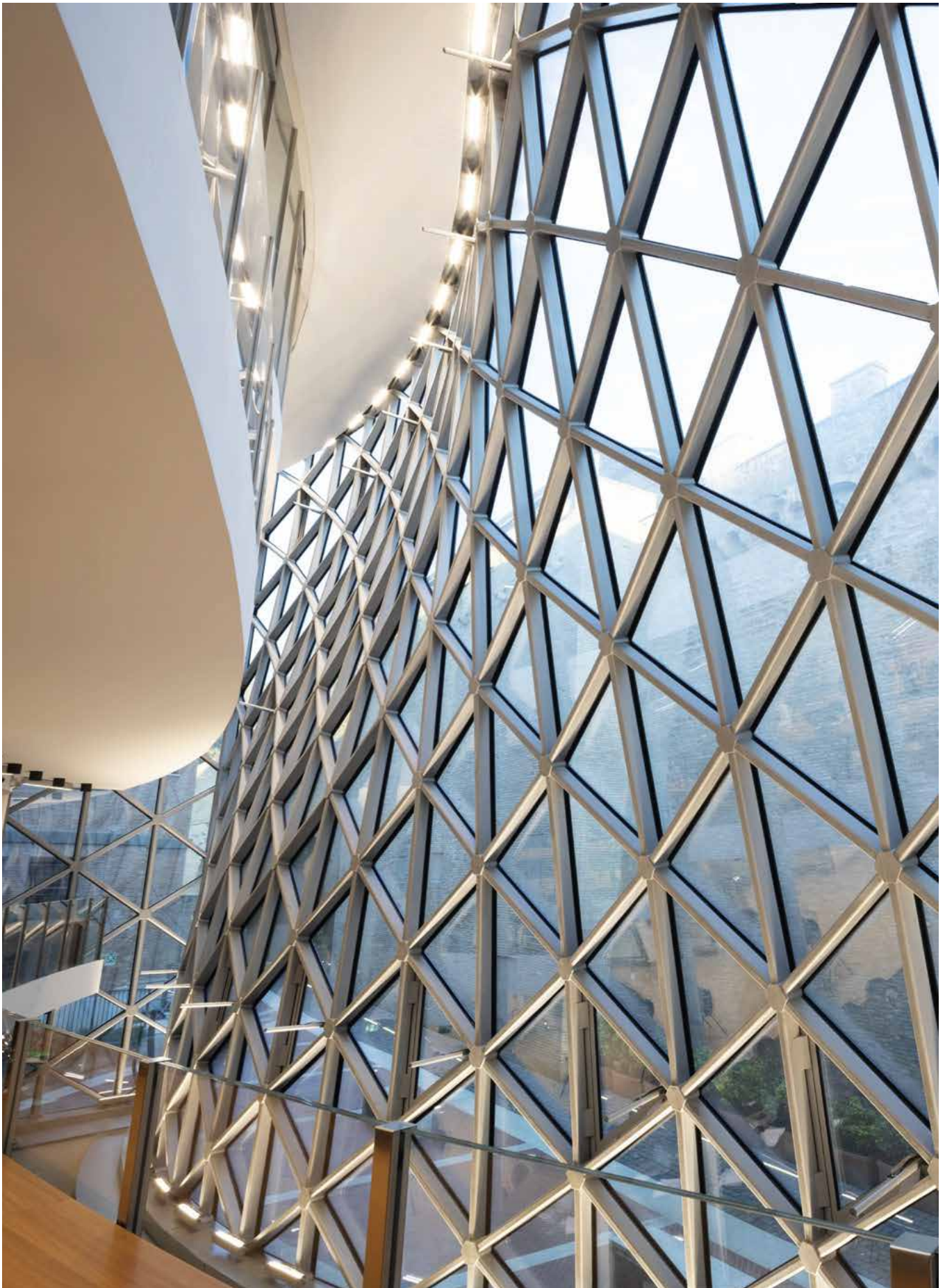
Code
<b>1T1898</b>
my-SCENARIO Show Store. Digital devices designed to control dynamic lighting fixtures and programme dynamic light scenarios and sequences. The system consists of intuitive software, compatible with Windows operating systems, able to control different hardware devices with the following functions: - record colour-changing scenarios set by the operator; - allow selection among the multiple scenarios already recorded; - transmit the control signals to the lighting system. The software is interfaced to the PC through a USB port; the interface with lighting fixtures is featured through a DMX 512 output. The software provides a graphic simulation of the operating keys of a lighting controller; the patching function allows the DMX control channels to be assigned to fixtures by using the internal library. The Colour Manager function allows for quick and intuitive programming of a RGB light show, consisting of several steps with assigned duration and fading times. The built-in calendar allows full time scheduling of show playback (month, day, hour, minutes, recurring events). The programmed light shows can be transferred to different control interfaces.



Code
<b>1T6499</b>
myScenario Wall. DMX controller with a glass touch sensitive screen for architectural applications. It can control two different DMX universes (2x 512 channels). Stand alone function or connected to a computer using a USB port. Software for creating scenarios (that can be downloaded from the Targetti website) included. It can manage 10 different lighting zones and 50 scenarios per zone. The touch keys on the front make it possible to modify and recall programmed scenarios. USB cable included. To be used with all RGB and RGBW products.

## Outdoor





## Requisites and information

All fixtures of the Targetti collection have been designed and produced to comply with European Standard EN60598-1 relative to the safety requisite of light fixtures.



All fixtures comply with the following directives:

- EMC Directive 2014/30/EU
- LV Directive 2014/35/EU
- RoHS Directive 2011/65/EU

## Unless specified otherwise

- all fixtures are supplied without lamps;
- all fixtures are sold separately;
- all measurements are expressed in millimeters;
- all fixtures at low voltage are supplied without transformer;
- For products in Class III performance is only guaranteed using the electronic power supplies and drivers indicated in the catalogue.

## Consorzio ecolight

Targetti Sankey Spa is a member of the Ecolight consortium that was set up in 2004 (D.Lgs. 49/2014) to comply with the provisions of the European Directive that was adopted in Italy as the European Directive 2012/19/EU for WEEE on managing, recovering and treating waste electrical and electronic equipment, used batteries and accumulators in compliance with all applicable legislation.

The colors of the products illustrated are reproduced as faithfully as possible compatibly with the technical limitations of the printed medium. The company reserves the right to make changes to the production without notice. Reproduction of this catalogue or any part of it is prohibited. The products illustrated in this catalogue are covered by one or more Italian or international patents. The company will take legal action against any imitators.



### TARGETTI SANKEY SpA

Certificated ISO 9001 n° 9130. TAR1  
Certificated ISO 14001 n° IT319206

The Enec mark, ISO9001 and ISO14001 certifications and the CE marking all guarantee that the activities carried out internally in the company are governed and controlled by procedures which assure constant level of quality.

Accredited laboratory in accordance with ISO 17025.

## Light beam apertures

from	to	beam	
5°	10°	Narrow Spot	<b>NSP</b>
11°	25°	Spot	<b>SP</b>
26°	40°	Flood	<b>FL</b>
41°	50°	Medium Wide Flood	<b>MWFL</b>
51°	70°	Wide Flood	<b>WFL</b>
71°	120°	Very Wide Flood	<b>VWFL</b>
		Wall Washer	<b>WW</b>
		Narrow Asymmetric	<b>N. ASYM</b>
		Asymmetric	<b>ASYM</b>



## Icons legend

	Class I luminaire in which the protection against electrical shock is guaranteed by the connections of the conductive elements accessible to a protective conductor (earth connection).
	Luminaire in which the connection to a protective conductor (earth connection) guarantees the immunity to radio noises.
	Class II luminaire (double insulation), protected against the accidental contact with parts under tension from the user.
	Class III luminaire, suitable for connection to very low voltage circuits.
	Solid particle and liquid ingress protection degree.
	Protection degree - Recessed part . Protection degree - Exposed part.
	Impact protection degree.
	ENEC European Norms Electrical Certification.

## Particular symbols

	Weight of the single fixture.
	Cable length.
	Walk-over.
	Driver-over safe.
	Fixtures that have parameters below the minimum visibility threshold $PstLM \leq 1$ and $SVM \leq 0.4$ (IEC TR 61547-1 and IEC TR 63158).
DBS	Dynamic Beam Shaper optical technology with remote management of the beam opening.
	LED with $Ra_{\_\_}$ where not present in the catalogue, available on request.
	Different colour temperatures available on request.
	Custom finish of your choice from the Targetti Colours range and RAL indicated in the colour chart can be downloaded on line from the download section.
	Treatment carried out on request.
	Supplied on request with an integrated or remote 110-277Vac power supply as indicated for the standard model.
	LED version with a different "Tunable White" tone available on request.

### Note

- ➔ Please contact us for on demand treatments and versions.
- ➔ The performances reported on the products refer to the use of the recommended drivers.
- ➔ The drivers selected by Targetti make the fixtures "Safe Flicker".

