

Ceiling and Wall

# MR & MRS SMITH



TARGETTI

# MR & MRS SMITH

## GENERAL INFO

Wall mounted LED fixtures.  
Mr Smith  
130x130x51.5mm  
Mrs Smith  
305x63.6x51.5mm

## LED

LED Chip on board high efficacy  
From 706lm to 2082lm  
2700K – 3000K – 4000K  
Ra80 - Ra90

## PRODUCT EFFICACY

Up to 97lm/W

## OPTICS

Opal version: Direct -  
Indirect - Direct/indirect

## POWER SUPPLY

Electronic – DALI - 24V

## MATERIAL

Anodised and painted die-cast aluminium body.  
Injection moulded opal polycarbonate screen.

## ON DEMAND



Easy Custom Colour



3500K



Cataphoresis treatment



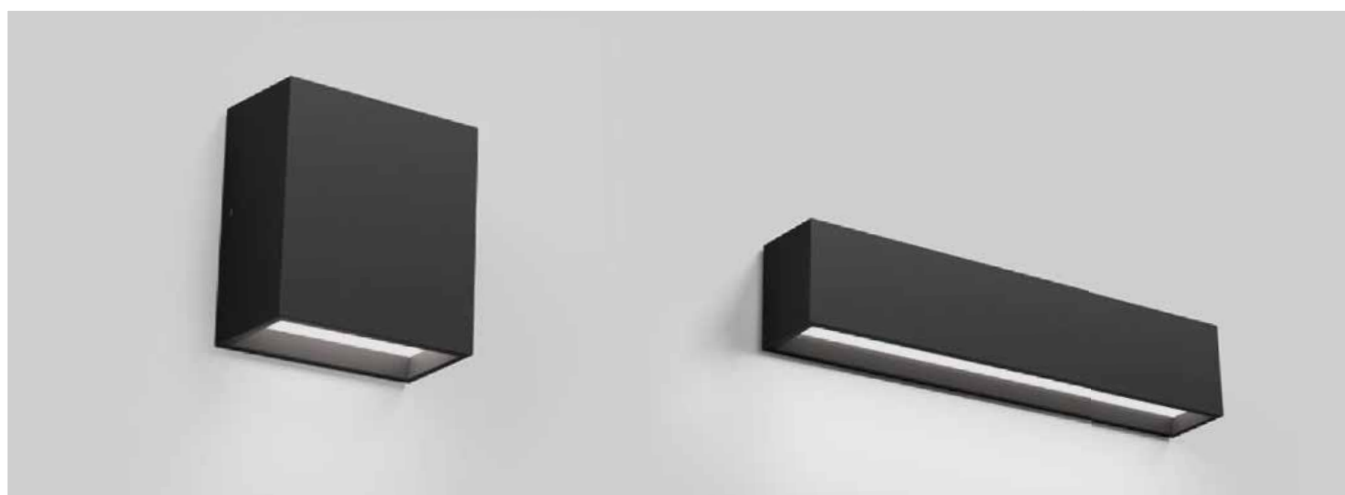
110-277Vac  
power supply

New applique for outdoor installation.

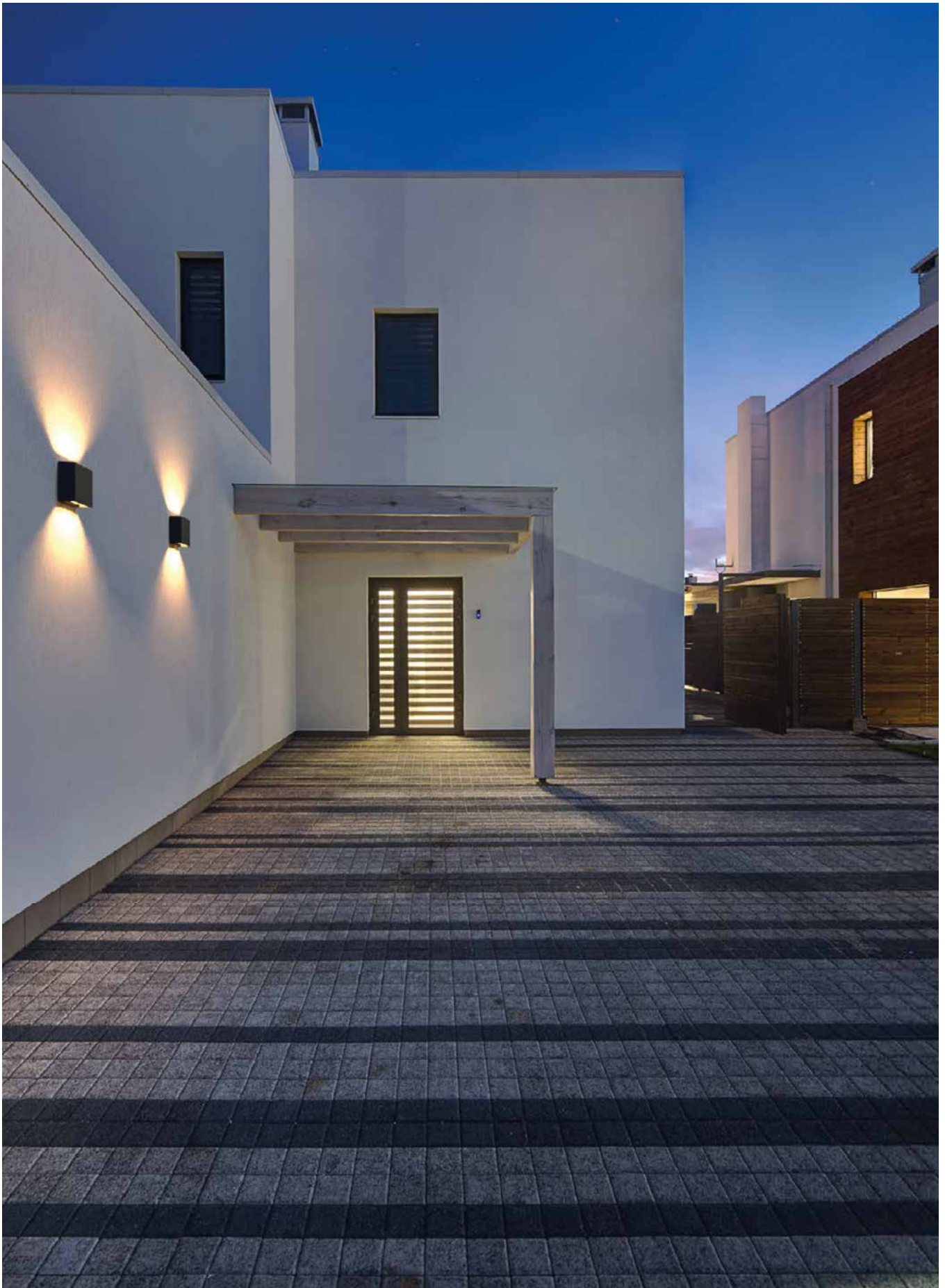
Available in two different versions: Square shaped Mr Smith and rectangular shaped Mrs Smith for wall mounted installations with direct fixing on the back of the product. Both versions are available with different emissions: indirect, direct and direct/indirect.

On request it is possible to subject the product to “Cataphoresis” treatment making it suitable to be installed near the sea (up to 5 metres) or in saline environment or in the presence of corrosive agents.

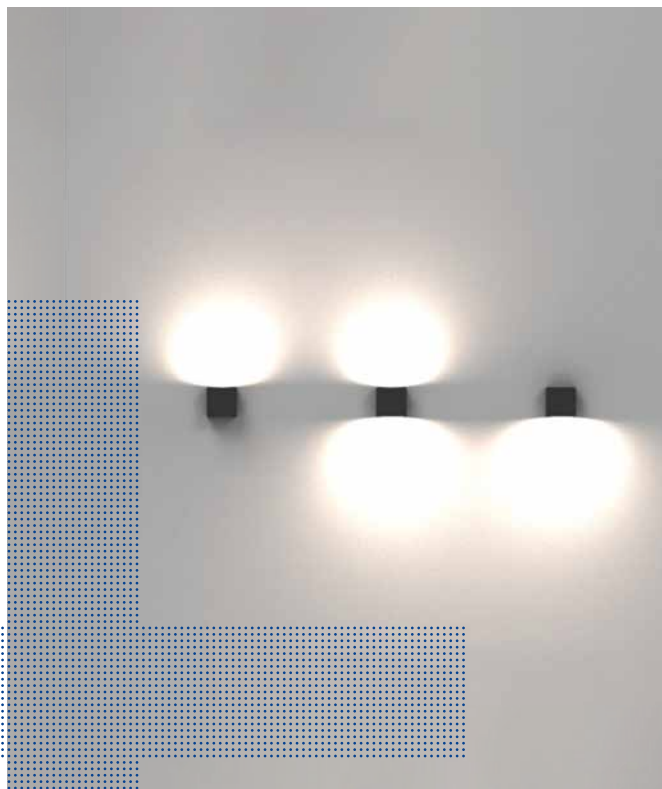
The entire range uses the “Waterblock Smart” technical solution that involves resin coating the connection cables limiting the risk of humidity reaching the driver or the fixture.



Outdoor



Ceiling and Wall



### Three light skimming effects

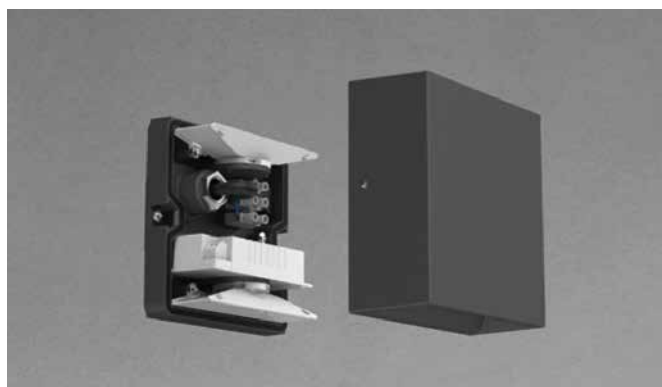
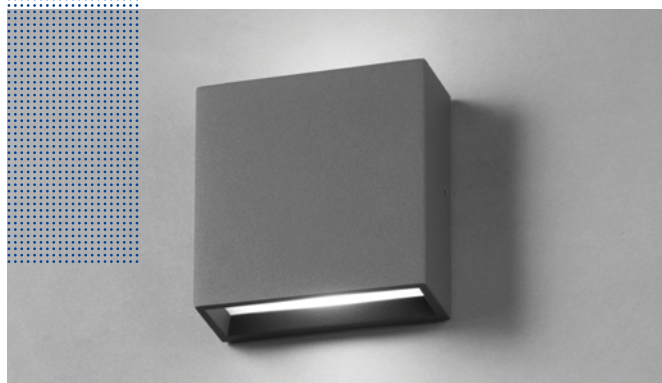
Direct, indirect, and direct/indirect emission.

The direct light version has an inclined plane at the bottom that, together with the opal polycarbonate screen, softly accompanies the light recalling the design of the ZEDGE Series.

In the version with only indirect or direct/indirect emission the polycarbonate screen at the top softly diffuses the light.

### Double geometry and easy installation

130x130 square solution and 63x300 rectangular solution, both made up of two elements for quick mounting without visible screws and an overall clean effect. The base is attached to the installation surface and the body of the device, which has different sections based on the type of emission, is attached to it.





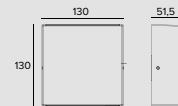


Ceiling and Wall

# MR & MRS SMITH



## MR SMITH



### LED / 5,9W / OPAL / DIRECT / 24Vdc



	3000K		H(m)	D1(m)	D2(m)	Emax(lx)
	Ra80		96"	81"		
Fixture Power	7W	1	2.25	1.72	243	
Source Flux	893lm	2	4.49	3.45	61	
Fixture Flux	489lm	3	6.74	5.17	27	
Efficacy	70lm/W	4	8.99	6.90	15	
TS1434	Imax=273cd/klm	Imax	244cd	5	11.23	8.62 10

Colour	2700K	3000K	4000K
	<b>1E3528</b>	<b>1E3530</b>	<b>1E3532</b>

### LED / 5,9W / OPAL / DIRECT / 220-240Vac



	3000K		H(m)	D1(m)	D2(m)	Emax(lx)
	Ra80		96"	81"		
Fixture Power	7W	1	2.25	1.72	258	
Source Flux	950lm	2	4.49	3.45	65	
Fixture Flux	520lm	3	6.74	5.17	29	
Efficacy	74lm/W	4	8.99	6.90	16	
TS1434	Imax=273cd/klm	Imax	259cd	5	11.23	8.62 10

Driver	Colour	2700K	3000K	4000K
EL.		<b>1E3527EL</b>	<b>1E3529EL</b>	<b>1E3531EL</b>
DALI		<b>1E3527DA</b>	<b>1E3529DA</b>	<b>1E3531DA</b>

### LED / 5,9W / OPAL / INDIRECT / 24Vdc



	3000K		H(m)	D1(m)	D2(m)	Emax(lx)
	Ra80		96"	81"		
Fixture Power	7W					
Source Flux	893lm					
Fixture Flux	622lm					
Efficacy	89lm/W					
TS1433	Imax=309cd/klm	Imax	276cd			

Colour	2700K	3000K	4000K
	<b>1E3522</b>	<b>1E3524</b>	<b>1E3526</b>

### LED / 5,9W / OPAL / INDIRECT / 220-240Vac



	3000K		H(m)	D1(m)	D2(m)	Emax(lx)
	Ra80		96"	81"		
Fixture Power	7W					
Source Flux	950lm					
Fixture Flux	661lm					
Efficacy	94lm/W					
TS1433	Imax=309cd/klm	Imax	294cd			

Driver	Colour	2700K	3000K	4000K
EL.		<b>1E3521EL</b>	<b>1E3523EL</b>	<b>1E3525EL</b>
DALI		<b>1E3521DA</b>	<b>1E3523DA</b>	<b>1E3525DA</b>

### LED / 12W / OPAL / DIRECT/INDIRECT / 24Vdc



	3000K		H(m)	D1(m)	D2(m)	Emax(lx)
	Ra80		96"	81"		
Fixture Power	13W	1	2.25	1.72	243	
Source Flux	1786lm	2	4.49	3.45	61	
Fixture Flux	1110lm	3	6.74	5.17	27	
Efficacy	83lm/W	4	8.99	6.90	15	
TS1435	Imax=155cd/klm	Imax	277cd	5	11.23	8.62 10

Colour	2700K	3000K	4000K
	<b>1E3534</b>	<b>1E3536</b>	<b>1E3538</b>

Outdoor

# MR & MRS SMITH

LED / 12W / OPAL / DIRECT/INDIRECT / 220-240Vac



	3000K	H(m)	D1(m)	D2(m)	E <sub>max</sub> (lx)
Ra80		96"	81"		
Fixture Power	13W	1	2.25	1.72	258
Source Flux	1900lm	2	4.49	3.45	65
Fixture Flux	1181lm	3	6.74	5.17	29
Efficacy	88lm/W	4	8.99	6.90	16
TS1435	I <sub>max</sub> =155cd/klm	I <sub>max</sub>	294cd	5	11.23
			8.62	10	

Driver	Colour	2700K	3000K	4000K
EL	●	<b>1E3533EL</b>	<b>1E3535EL</b>	<b>1E3537EL</b>
DALI	●	<b>1E3533DA</b>	<b>1E3535DA</b>	<b>1E3537DA</b>

## Note

24V version to be powered with an electronic 230V/24Vdc transformer available as an accessory and dimmable with the special accessory kit.

Ra90: to order this version it is necessary to add the suffix "90" at the end of the standard code (Ra80).

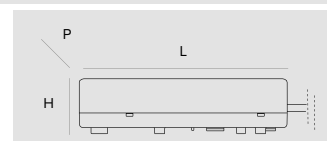
## Related codes

### Power Supply



Dimensions ØxH	W	Power supply	Output voltage	IP	Code
98x78	max 20W	220-240Vac	24Vdc	IP68	<b>1E0993</b>

Electronic power supply.



Dimensions LxHxP	W	Power supply	Output voltage	IP	Code
79x25x38	10W	220-240Vac	24Vdc	IP67	<b>1E3179</b>
185x22x64	50W	220-240Vac	24Vdc	IP20	<b>1T3726</b>
162x32x49	75W	220-240Vac	24Vdc	IP67	<b>1T3586</b>
230x87x43	100W	220-240Vac	24Vdc	IP67	<b>1T3587</b>
238x42x67	200W	220-240Vac	24Vdc	IP67	<b>1T3588</b>

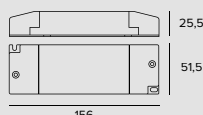
Electronic power supply.

## Note

The drivers selected by Targetti make the fixtures "Safe Flicker".

## Accessories

### Control systems



Code
<b>1T6581</b>

Dimmer for 12-24Vdc constant voltage LED driver.  
1-10V/DALI control input.  
IP20



Code
<b>1E3048</b>

A IP67 Module for individual control of external devices equipped with DALI drivers.  
The module needs to be positioned in order to receive radio signals.  
The distance to the lighting fixtures can reach up to 50m.  
Wireless control via the Casambi application.  
LxHxP=56.5x22.3x35.8mm.

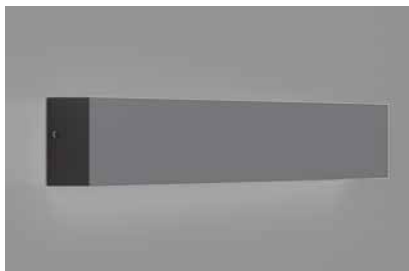


Code
<b>1E3049</b>

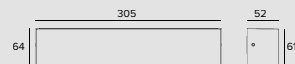
IP67 Extender for wireless control of DALI fixtures.  
It generates a local DALI bus with the capacity to drive up to 64 fixtures.  
Can control DALI fixtures in outdoor applications via the Casambi application.  
LxHxP=150x40x148mm.

Ceiling and Wall

# MR & MRS SMITH



MRS SMITH



## LED / 6,1W / OPAL / DIRECT / 24Vdc



	3000K		H(m)	D1(m)	D2(m)	Emax(lx)
	Ra80			90°	100°	
Fixture Power	7W	1	2.00	2.38	262	
Source Flux	994lm	2	4.01	4.75	65	
Fixture Flux	565lm	3	6.01	7.13	29	
Efficacy	82lm/W	4	8.01	9.50	16	
TS1202	Imax=264cd/klm	Imax	262cd	5	10.01	11.88
				10		

Colour	2700K	3000K	4000K
	<b>1E3546</b>	<b>1E3548</b>	<b>1E3550</b>

## LED / 6,1W / OPAL / DIRECT / 220-240Vac



	3000K		H(m)	D1(m)	D2(m)	Emax(lx)
	Ra80			90°	100°	
Fixture Power	7W	1	2.00	2.38	231	
Source Flux	876lm	2	4.01	4.75	58	
Fixture Flux	498lm	3	6.01	7.13	26	
Efficacy	72lm/W	4	8.01	9.50	14	
TS1202	Imax=264cd/klm	Imax	231cd	5	10.01	11.88
				9		

Driver	Colour	2700K	3000K	4000K
EL.		<b>1E3545EL</b>	<b>1E3547EL</b>	<b>1E3549EL</b>
DALI		<b>1E3545DA</b>	<b>1E3547DA</b>	<b>1E3549DA</b>

## LED / 6,1W / OPAL / INDIRECT / 24Vdc



	3000K		H(m)	D1(m)	D2(m)	Emax(lx)
	Ra80			90°	100°	
Fixture Power	7W					
Source Flux	994lm					
Fixture Flux	633lm					
Efficacy	92lm/W					
TS1200	Imax=260cd/klm	Imax	258cd			

Colour	2700K	3000K	4000K
	<b>1E3540</b>	<b>1E3542</b>	<b>1E3544</b>

## LED / 6,1W / OPAL / INDIRECT / 220-240Vac



	3000K		H(m)	D1(m)	D2(m)	Emax(lx)
	Ra80			90°	100°	
Fixture Power	7W					
Source Flux	876lm					
Fixture Flux	558lm					
Efficacy	81lm/W					
TS1200	Imax=260cd/klm	Imax	228cd			

Driver	Colour	2700K	3000K	4000K
EL.		<b>1E3539EL</b>	<b>1E3541EL</b>	<b>1E3543EL</b>
DALI		<b>1E3539DA</b>	<b>1E3541DA</b>	<b>1E3543DA</b>

## LED / 12W / OPAL / DIRECT/INDIRECT / 24Vdc



	3000K		H(m)	D1(m)	D2(m)	Emax(lx)
	Ra80			90°	100°	
Fixture Power	14W	1	2.00	2.38	262	
Source Flux	1988lm	2	4.01	4.75	65	
Fixture Flux	1198lm	3	6.01	7.13	29	
Efficacy	86lm/W	4	8.01	9.50	16	
TS1204	Imax=132cd/klm	Imax	262cd	5	10.01	11.88
				10		

Colour	2700K	3000K	4000K
	<b>1E3552</b>	<b>1E3554</b>	<b>1E3556</b>

Outdoor



# MR & MRS SMITH

LED / 12W / OPAL / DIRECT/INDIRECT / 220-240Vac



	3000K	H(m)	D1(m)	D2(m)	E <sub>max</sub> (lx)
Ra80		90°	100°		
Fixture Power	14W	1	2.00	2.38	231
Source Flux	1752lm	2	4.01	4.75	58
Fixture Flux	1055lm	3	6.01	7.13	26
Efficacy	76lm/W	4	8.01	9.50	14
TS1204	I <sub>max</sub> =132cd/klm	I <sub>max</sub>	231cd	5	10.01
			11.88	9	

Driver	Colour	2700K	3000K	4000K
EL		<b>1E3551EL</b>	<b>1E3553EL</b>	<b>1E3555EL</b>
DALI		<b>1E3551DA</b>	<b>1E3553DA</b>	<b>1E3555DA</b>

## Note

24V version to be powered with an electronic 230V/24Vdc transformer available as an accessory and dimmable with the special accessory kit.

Ra90: to order this version it is necessary to add the suffix "90" at the end of the standard code (Ra80).

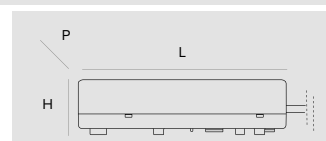
## Related codes

### Power Supply



Dimensions ØxH	W	Power supply	Output voltage	IP	Code
98x78	max 20W	220-240Vac	24Vdc	IP68	<b>1E0993</b>

Electronic power supply.



Dimensions LxHxP	W	Power supply	Output voltage	IP	Code
79x25x38	10W	220-240Vac	24Vdc	IP67	<b>1E3179</b>
185x22x64	50W	220-240Vac	24Vdc	IP20	<b>1T3726</b>
162x32x49	75W	220-240Vac	24Vdc	IP67	<b>1T3586</b>
230x87x43	100W	220-240Vac	24Vdc	IP67	<b>1T3587</b>
238x42x67	200W	220-240Vac	24Vdc	IP67	<b>1T3588</b>

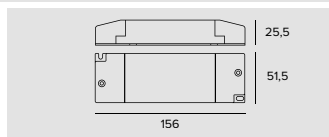
Electronic power supply.

## Note

The drivers selected by Targetti make the fixtures "Safe Flicker".

## Accessories

### Control systems



Code
<b>1T6581</b>

Dimmer for 12-24Vdc constant voltage LED driver.  
1-10V/DALI control input.  
IP20



Code
<b>1E3048</b>

A IP67 Module for individual control of external devices equipped with DALI drivers.  
The module needs to be positioned in order to receive radio signals.  
The distance to the lighting fixtures can reach up to 50m.  
Wireless control via the Casambi application.  
LxHxP=56.5x22.3x35.8mm.



Code
<b>1E3049</b>

IP67 Extender for wireless control of DALI fixtures.  
It generates a local DALI bus with the capacity to drive up to 64 fixtures.  
Can control DALI fixtures in outdoor applications via the Casambi application.  
LxHxP=150x40x148mm.

Ceiling and Wall

## Requisites and information

All fixtures of the Targetti collection have been designed and produced to comply with European Standard EN60598-1 relative to the safety requisite of light fixtures.



All fixtures comply with the following directives:

- EMC Directive 2014/30/EU
- LV Directive 2014/35/EU
- RoHS Directive 2011/65/EU

## Unless specified otherwise

- all fixtures are supplied without lamps;
- all fixtures are sold separately;
- all measurements are expressed in millimeters;
- all fixtures at low voltage are supplied without transformer;
- For products in Class III performance is only guaranteed using the electronic power supplies and drivers indicated in the catalogue.

## Consorzio ecolight

Targetti Sankey Spa is a member of the Ecolight consortium that was set up in 2004 (D.Lgs. 49/2014) to comply with the provisions of the European Directive that was adopted in Italy as the European Directive 2012/19/EU for WEEE on managing, recovering and treating waste electrical and electronic equipment, used batteries and accumulators in compliance with all applicable legislation.

The colors of the products illustrated are reproduced as faithfully as possible compatibly with the technical limitations of the printed medium. The company reserves the right to make changes to the production without notice. Reproduction of this catalogue or any part of it is prohibited. The products illustrated in this catalogue are covered by one or more Italian or international patents. The company will take legal action against any imitators.



### TARGETTI SANKEY SpA

Certificated ISO 9001 n° 9130. TAR1  
Certificated ISO 14001 n° IT319206

The Enec mark, ISO9001 and ISO14001 certifications and the CE marking all guarantee that the activities carried out internally in the company are governed and controlled by procedures which assure constant level of quality.

Accredited laboratory in accordance with ISO 17025.

## Light beam apertures

from	to	beam	
5°	10°	Narrow Spot	<b>NSP</b>
11°	25°	Spot	<b>SP</b>
26°	40°	Flood	<b>FL</b>
41°	50°	Medium Wide Flood	<b>MWFL</b>
51°	70°	Wide Flood	<b>WFL</b>
71°	120°	Very Wide Flood	<b>VWFL</b>
		Wall Washer	<b>WW</b>
		Narrow Asymmetric	<b>N. ASYM</b>
		Asymmetric	<b>ASYM</b>

## Icons legend

	Class I luminaire in which the protection against electrical shock is guaranteed by the connections of the conductive elements accessible to a protective conductor (earth connection).
	Luminaire in which the connection to a protective conductor (earth connection) guarantees the immunity to radio noises.
	Class II luminaire (double insulation), protected against the accidental contact with parts under tension from the user.
	Class III luminaire, suitable for connection to very low voltage circuits.
	Solid particle and liquid ingress protection degree.
	Protection degree - Recessed part . Protection degree - Exposed part.
	Impact protection degree.
	ENEC European Norms Electrical Certification.

## Particular symbols

	Weight of the single fixture.
	Cable length.
	Walk-over.
	Driver-over safe.
	Fixtures that have parameters below the minimum visibility threshold $PstLM \leq 1$ and $SVM \leq 0.4$ (IEC TR 61547-1 and IEC TR 63158).
DBS	Dynamic Beam Shaper optical technology with remote management of the beam opening.
	LED with Ra__ where not present in the catalogue, available on request.
	Different colour temperatures available on request.
	Custom finish of your choice from the Targetti Colours range and RAL indicated in the colour chart can be downloaded on line from the download section.
	Treatment carried out on request.
	Supplied on request with an integrated or remote 110-277Vac power supply as indicated for the standard model.
	LED version with a different "Tunable White" tone available on request.

### Note

- ➔ Please contact us for on demand treatments and versions.
- ➔ The performances reported on the products refer to the use of the recommended drivers.
- ➔ The drivers selected by Targetti make the fixtures "Safe Flicker".

