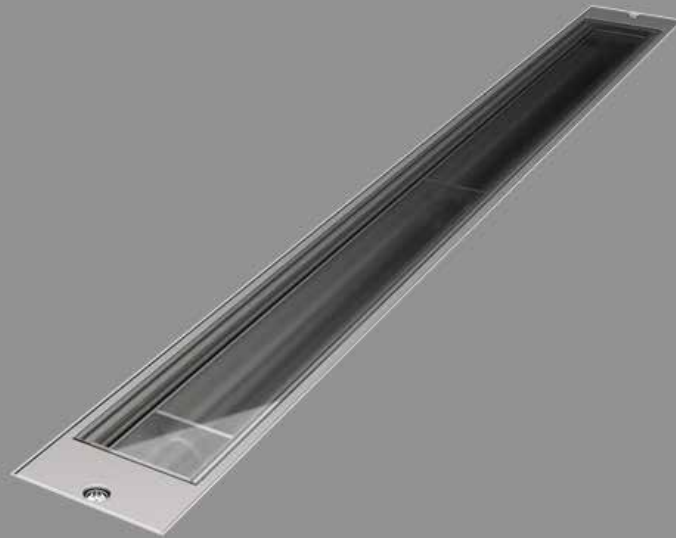


Inground

# JEDI COMPACT



TARGETTI



# JEDI

## Compact Recessed Outdoor

### GENERAL INFO

Ground recessed linear projector  
53x43mm (remote driver)  
53x80mm (integrated driver)  
Length 344mm – 625mm  
– 905mm – 1185mm

### LED

Linear boards  
From 1431 to 7200lm  
2700K – 3000K – 3500K  
– 4000K  
Ra80

### PRODUCT EFFICACY

Up to 125lm/W

### OPTICS

SP, FL, Grazing,  
Wall Washer

### with Louvre

FL, Grazing, Wall Washer

### POWER SUPPLY

Electronic – DALI  
Casambi control system  
available using a dedicated  
accessory (only for DALI  
version products).

### MATERIAL

Extruded anodised  
aluminium 15µ body. Extra  
clear 5mm thick glass flat  
screen.

### ON DEMAND



Ra90



110-277Vac  
power supply

Compact, high performance, recessed linear LED fixture.

The 34mm version is only available with a remote driver.

To be completed with a special outer casing. Four different optics available: Spot, Flood, Grazing and Wall Washer.

The Flood, Grazing and Wall Washer optic versions can be ordered already equipped with an integrated Louvre grill with longitudinal blades to control lateral emission and reduce the risk of glare.

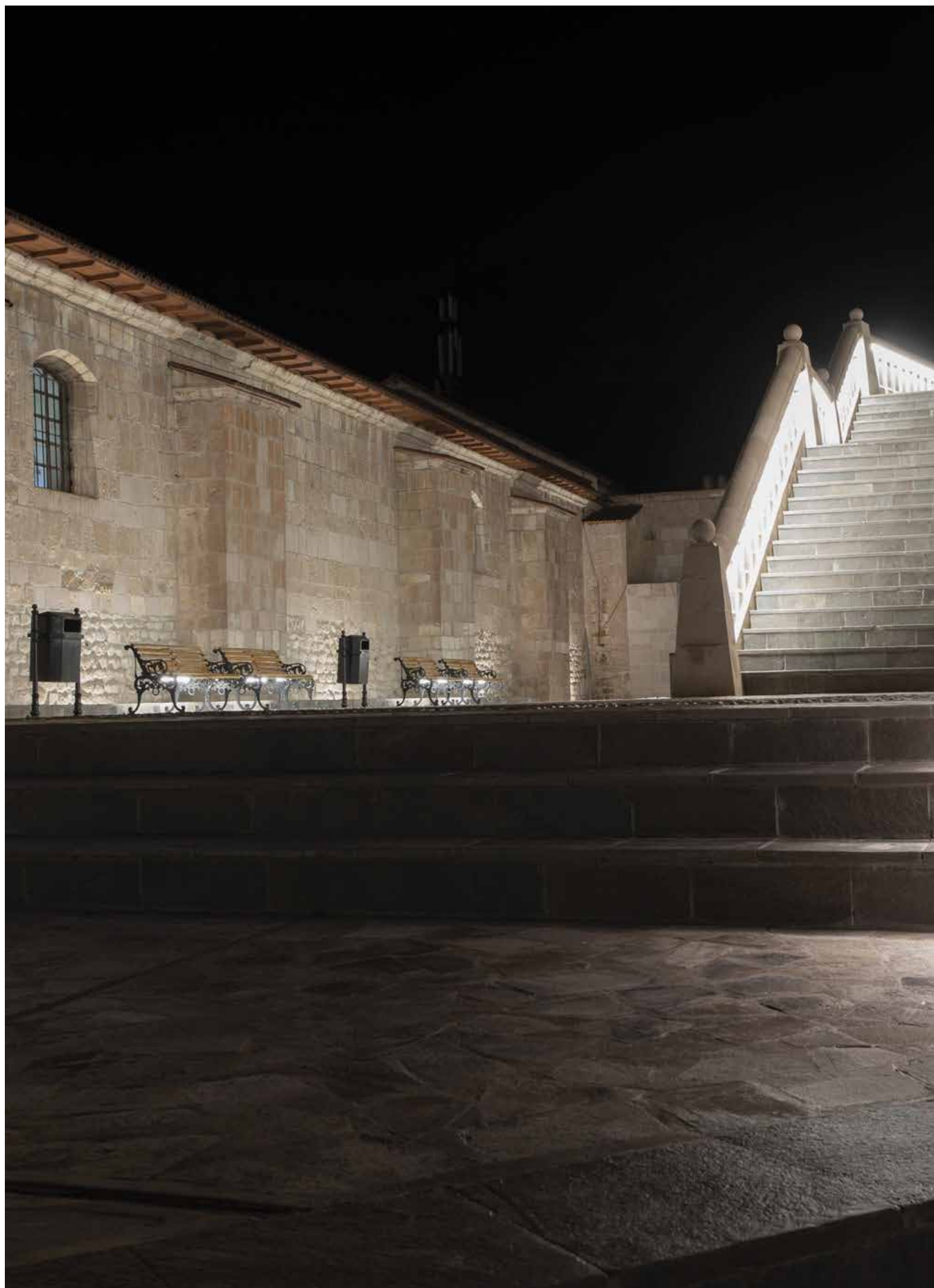
The entire range uses the “Waterblock Smart” technical solution that involves resin coating the connection cables limiting the risk of humidity reaching the driver or the fixture.

Also available in a projector version both for indoor and outdoor installations.



Outdoor







# JEDI COMPACT



## Outdoor Recessed Remote driver L. 344mm



### LED / 12W / SPOT



3000K	H(m)	D(m)	E <sub>max</sub> (lx)
Ra80		11°	
Fixture Power	12W	1	0.20
Source Flux	1554lm	2	0.40
Fixture Flux	1288lm	3	0.59
Efficacy	107lm/W	4	0.79
TS1339	Imax=12736cd/klm	Imax	19792cd
			792

Power supply	Colour	2700K	3000K	3500K	4000K
500mA		<b>1E3835</b>	<b>1E3836</b>	<b>1E3837</b>	<b>1E3838</b>

### LED / 12W / FLOOD



3000K	H(m)	D1(m)	D2(m)	E <sub>max</sub> (lx)
Ra80		85°	32°	
Fixture Power	12W	1	1.84	0.57
Source Flux	1720lm	2	3.68	1.14
Fixture Flux	1285lm	3	5.52	1.70
Efficacy	107lm/W	4	7.36	2.27
TS1084	Imax=699cd/klm	Imax	1203cd	
			9.20	2.84
				48

Power supply	Colour	2700K	3000K	3500K	4000K
500mA		<b>1E3561</b>	<b>1E3562</b>	<b>1E3563</b>	<b>1E3564</b>

### LED / 12W / GRAZING



3000K	H(m)	D1(m)	D2(m)	E <sub>max</sub> (lx)
Ra80		76°	15°	
Fixture Power	12W	1	1.55	0.26
Source Flux	1720lm	2	3.10	0.51
Fixture Flux	1429lm	3	4.65	0.77
Efficacy	119lm/W	4	6.21	1.02
TS1088	Imax=1600cd/klm	Imax	2752cd	
			7.76	1.28
				110

Power supply	Colour	2700K	3000K	3500K	4000K
500mA		<b>1E3565</b>	<b>1E3566</b>	<b>1E3567</b>	<b>1E3568</b>

### LED / 12W / WALL WASHER



3000K	H(m)	D1(m)	D2(m)	E <sub>max</sub> (lx)
Ra80		115°	59°	
Fixture Power	12W	1	3.12	1.34
Source Flux	1720lm	2	6.23	2.67
Fixture Flux	1293lm	3	9.35	4.01
Efficacy	108lm/W	4	12.47	5.35
TS1092	Imax=774cd/klm	Imax	1331cd	
			15.59	6.69
				46

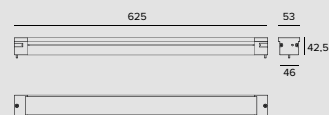
Power supply	Colour	2700K	3000K	3500K	4000K
500mA		<b>1E3569</b>	<b>1E3570</b>	<b>1E3571</b>	<b>1E3572</b>



# JEDI COMPACT



## Outdoor Recessed Remote driver L. 625mm



### LED / 23W / SPOT

	3000K	H(m)	D(m)	E <sub>max</sub> (lx)
	Ra80		11°	
	Fixture Power	23W	1	0.20 38437
	Source Flux	3018lm	2	0.40 9609
	Fixture Flux	2501lm	3	0.59 4271
	Efficacy	109lm/W	4	0.79 2402
TS1339	I <sub>max</sub> =12736cd/klm	I <sub>max</sub>	38437cd	5 0.99 1537

Power supply	Colour	2700K	3000K	3500K	4000K
500mA		<b>1E3839</b>	<b>1E3840</b>	<b>1E3841</b>	<b>1E3842</b>

### LED / 24W / FLOOD

	3000K	H(m)	D1(m)	D2(m)	E <sub>max</sub> (lx)
	Ra80		85°	32°	
	Fixture Power	24W	1	1.84	0.57 2406
	Source Flux	3440lm	2	3.68	1.14 601
	Fixture Flux	2570lm	3	5.52	1.70 267
	Efficacy	107lm/W	4	7.36	2.27 150
TS1084	I <sub>max</sub> =699cd/klm	I <sub>max</sub>	2406cd	5 9.20 2.84 96	

Power supply	Colour	2700K	3000K	3500K	4000K
500mA		<b>1E3585</b>	<b>1E3586</b>	<b>1E3587</b>	<b>1E3588</b>

### LED / 24W / GRAZING

	3000K	H(m)	D1(m)	D2(m)	E <sub>max</sub> (lx)
	Ra80		76°	15°	
	Fixture Power	24W	1	1.55	0.26 5505
	Source Flux	3440lm	2	3.10	0.51 1376
	Fixture Flux	2858lm	3	4.65	0.77 612
	Efficacy	119lm/W	4	6.21	1.02 344
TS1088	I <sub>max</sub> =1600cd/klm	I <sub>max</sub>	5505cd	5 7.76 1.28 220	

Power supply	Colour	2700K	3000K	3500K	4000K
500mA		<b>1E3589</b>	<b>1E3590</b>	<b>1E3591</b>	<b>1E3592</b>

### LED / 24W / WALL WASHER

	3000K	H(m)	D1(m)	D2(m)	E <sub>max</sub> (lx)
	Ra80		115°	59°	
	Fixture Power	24W	1	3.12	1.34 2312
	Source Flux	3440lm	2	6.23	2.67 578
	Fixture Flux	2586lm	3	9.35	4.01 257
	Efficacy	108lm/W	4	12.47	5.35 145
TS1092	I <sub>max</sub> =774cd/klm	I <sub>max</sub>	2661cd	5 15.59 6.69 92	

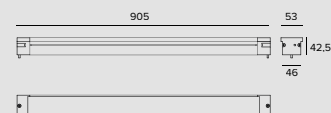
Power supply	Colour	2700K	3000K	3500K	4000K
500mA		<b>1E3593</b>	<b>1E3594</b>	<b>1E3595</b>	<b>1E3596</b>



# JEDI COMPACT



## Outdoor Recessed Remote driver L. 905mm



### LED / 35W / SPOT



	3000K	H(m)	D(m)	E <sub>max</sub> (lx)
Ra80			11°	
Fixture Power	35W	1	0.20	59376
Source Flux	4662lm	2	0.40	14844
Fixture Flux	3863lm	3	0.59	6597
Efficacy	110lm/W	4	0.79	3711
TS1339- I <sub>max</sub> =12736cd/klm	I <sub>max</sub>	5	0.99	2375

Power supply	Colour	2700K	3000K	3500K	4000K
500mA		<b>1E3843</b>	<b>1E3844</b>	<b>1E3845</b>	<b>1E3846</b>

### LED / 36W / FLOOD



	3000K	H(m)	D1(m)	D2(m)	E <sub>max</sub> (lx)
Ra80			85°	32°	
Fixture Power	36W	1	1.84	0.57	3609
Source Flux	5160lm	2	3.68	1.14	902
Fixture Flux	3856lm	3	5.52	1.70	401
Efficacy	107lm/W	4	7.36	2.27	226
TS1085 I <sub>max</sub> =699cd/klm	I <sub>max</sub>	5	9.20	2.84	144

Power supply	Colour	2700K	3000K	3500K	4000K
500mA		<b>1E3609</b>	<b>1E3610</b>	<b>1E3611</b>	<b>1E3612</b>

### LED / 36W / GRAZING



	3000K	H(m)	D1(m)	D2(m)	E <sub>max</sub> (lx)
Ra80			76°	15°	
Fixture Power	36W	1	1.55	0.26	8259
Source Flux	5160lm	2	3.10	0.51	2065
Fixture Flux	4288lm	3	4.65	0.77	918
Efficacy	119lm/W	4	6.21	1.02	516
TS1089 I <sub>max</sub> =1601cd/klm	I <sub>max</sub>	5	7.76	1.28	330

Power supply	Colour	2700K	3000K	3500K	4000K
500mA		<b>1E3613</b>	<b>1E3614</b>	<b>1E3615</b>	<b>1E3616</b>

### LED / 36W / WALL WASHER



	3000K	H(m)	D1(m)	D2(m)	E <sub>max</sub> (lx)
Ra80			115°	59°	
Fixture Power	36W	1	3.12	1.34	3468
Source Flux	5160lm	2	6.23	2.67	867
Fixture Flux	3879lm	3	9.35	4.01	385
Efficacy	108lm/W	4	12.47	5.35	217
TS1093 I <sub>max</sub> =774cd/klm	I <sub>max</sub>	5	15.59	6.69	139

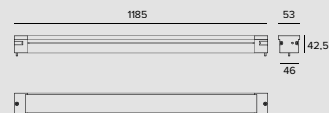
Power supply	Colour	2700K	3000K	3500K	4000K
500mA		<b>1E3617</b>	<b>1E3618</b>	<b>1E3619</b>	<b>1E3620</b>



# JEDI COMPACT



## Outdoor Recessed Remote driver L. 1185mm



### LED / 46W / SPOT

	3000K	H(m)	D(m)	E <sub>max</sub> (lx)
	Ra80		11°	
	Fixture Power	46W	1	0.20 79167
	Source Flux	6216lm	2	0.40 19792
	Fixture Flux	5151lm	3	0.59 8796
	Efficacy	112lm/W	4	0.79 4948

TS1339- I<sub>max</sub>=12736cd/klm

I <sub>max</sub>	79167cd	5	0.99	3167
------------------	---------	---	------	------

Power supply	Colour	2700K	3000K	3500K	4000K
500mA		<b>1E3847</b>	<b>1E3848</b>	<b>1E3849</b>	<b>1E3850</b>

### LED / 48W / FLOOD

	3000K	H(m)	D1(m)	D2(m)	E <sub>max</sub> (lx)
	Ra80		85°	32°	
	Fixture Power	48W	1	1.84	0.57 4812
	Source Flux	6880lm	2	3.68	1.14 1203
	Fixture Flux	5141lm	3	5.52	1.70 535
	Efficacy	107lm/W	4	7.36	2.27 301

TS1085 I<sub>max</sub>=699cd/klm

I <sub>max</sub>	4812cd	5	9.20	2.84	192
------------------	--------	---	------	------	-----

Power supply	Colour	2700K	3000K	3500K	4000K
500mA		<b>1E3633</b>	<b>1E3634</b>	<b>1E3635</b>	<b>1E3636</b>

### LED / 48W / GRAZING

	3000K	H(m)	D1(m)	D2(m)	E <sub>max</sub> (lx)
	Ra80		76°	15°	
	Fixture Power	48W	1	1.55	0.26 11012
	Source Flux	6880lm	2	3.10	0.51 2753
	Fixture Flux	5717lm	3	4.65	0.77 1224
	Efficacy	119lm/W	4	6.21	1.02 688

TS1089 I<sub>max</sub>=1601cd/klm

I <sub>max</sub>	11012cd	5	7.76	1.28	440
------------------	---------	---	------	------	-----

Power supply	Colour	2700K	3000K	3500K	4000K
500mA		<b>1E3637</b>	<b>1E3638</b>	<b>1E3639</b>	<b>1E3640</b>

### LED / 48W / WALL WASHER

	3000K	H(m)	D1(m)	D2(m)	E <sub>max</sub> (lx)
	Ra80		115°	59°	
	Fixture Power	48W	1	3.12	1.34 4624
	Source Flux	6880lm	2	6.23	2.67 1156
	Fixture Flux	5172lm	3	9.35	4.01 514
	Efficacy	108lm/W	4	12.47	5.35 289

TS1093 I<sub>max</sub>=774cd/klm

I <sub>max</sub>	5322cd	5	15.59	6.69	185
------------------	--------	---	-------	------	-----

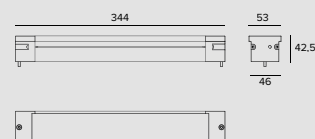
Power supply	Colour	2700K	3000K	3500K	4000K
500mA		<b>1E3641</b>	<b>1E3642</b>	<b>1E3643</b>	<b>1E3644</b>



# JEDI COMPACT



## Outdoor Recessed Louvre Remote driver L. 344mm



### LED / 12W / FLOOD



	3000K	H(m)	D1(m)	D2(m)	Emax(lx)
Ra80		86°	29°		
Fixture Power	12W	1	1.86	0.52	873
Source Flux	1720lm	2	3.71	1.05	218
Fixture Flux	752lm	3	5.57	1.57	97
Efficacy	63lm/W	4	7.42	2.09	55
TS1086	Imax=508cd/klm	Imax	873cd	5	9.28
				2.62	35

Power supply	Colour	2700K	3000K	3500K	4000K
500mA	●	<b>1E3573</b>	<b>1E3574</b>	<b>1E3575</b>	<b>1E3576</b>

### LED / 12W / GRAZING



	3000K	H(m)	D1(m)	D2(m)	Emax(lx)
Ra80		80°	13°		
Fixture Power	12W	1	1.68	0.23	1903
Source Flux	1720lm	2	3.36	0.46	476
Fixture Flux	912lm	3	5.04	0.68	211
Efficacy	76lm/W	4	6.72	0.91	119
TS1090	Imax=1106cd/klm	Imax	1903cd	5	8.40
				1.14	76

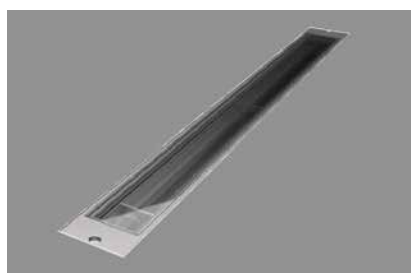
Power supply	Colour	2700K	3000K	3500K	4000K
500mA	●	<b>1E3577</b>	<b>1E3578</b>	<b>1E3579</b>	<b>1E3580</b>

### LED / 12W / WALL WASHER

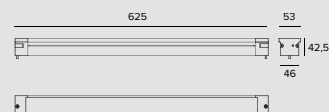


	3000K	H(m)	D1(m)	D2(m)	Emax(lx)
Ra80		116°	62°		
Fixture Power	12W	1	3.17	1.49	960
Source Flux	1720lm	2	6.35	2.97	240
Fixture Flux	975lm	3	9.52	4.46	107
Efficacy	81lm/W	4	12.70	5.95	60
TS1094	Imax=671cd/klm	Imax	1153cd	5	15.87
				7.43	38

Power supply	Colour	2700K	3000K	3500K	4000K
500mA	●	<b>1E3581</b>	<b>1E3582</b>	<b>1E3583</b>	<b>1E3584</b>



## Outdoor Recessed Louvre Remote driver L. 625mm



### LED / 24W / FLOOD



	3000K	H(m)	D1(m)	D2(m)	Emax(lx)
Ra80		86°	29°		
Fixture Power	24W	1	1.86	0.52	1747
Source Flux	3440lm	2	3.71	1.05	437
Fixture Flux	1503lm	3	5.57	1.57	194
Efficacy	63lm/W	4	7.42	2.09	109
TS1086	Imax=508cd/klm	Imax	1747cd	5	9.28
				2.62	70

Power supply	Colour	2700K	3000K	3500K	4000K
500mA	●	<b>1E3597</b>	<b>1E3598</b>	<b>1E3599</b>	<b>1E3600</b>



# JEDI COMPACT

## LED / 24W / GRAZING

	3000K	H(m)	D1(m)	D2(m)	E <sub>max</sub> (lx)
Ra80			80°	13°	
Fixture Power	24W	1	1.68	0.23	3805
Source Flux	3440lm	2	3.36	0.46	951
Fixture Flux	1824lm	3	5.04	0.68	423
Efficacy	76lm/W	4	6.72	0.91	238
TS1090	I <sub>max</sub> =1106cd/klm	I <sub>max</sub>	3805cd	5	8.40
			1.14	152	

Power supply	Colour	2700K	3000K	3500K	4000K
500mA	●	<b>1E3601</b>	<b>1E3602</b>	<b>1E3603</b>	<b>1E3604</b>

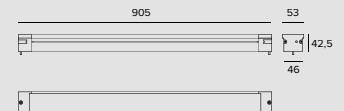
## LED / 24W / WALL WASHER

	3000K	H(m)	D1(m)	D2(m)	E <sub>max</sub> (lx)
Ra80			116°	62°	
Fixture Power	24W	1	3.17	1.49	1919
Source Flux	3440lm	2	6.35	2.97	480
Fixture Flux	1950lm	3	9.52	4.46	213
Efficacy	81lm/W	4	12.70	5.95	120
TS1094	I <sub>max</sub> =671cd/klm	I <sub>max</sub>	2307cd	5	15.87
			7.43	77	

Power supply	Colour	2700K	3000K	3500K	4000K
500mA	●	<b>1E3605</b>	<b>1E3606</b>	<b>1E3607</b>	<b>1E3608</b>



## Outdoor Recessed Louvre Remote driver L. 905mm



## LED / 36W / FLOOD

	3000K	H(m)	D1(m)	D2(m)	E <sub>max</sub> (lx)
Ra80			86°	29°	
Fixture Power	36W	1	1.86	0.52	2620
Source Flux	5160lm	2	3.71	1.05	655
Fixture Flux	2255lm	3	5.57	1.57	291
Efficacy	63lm/W	4	7.42	2.09	164
TS1087	I <sub>max</sub> =508cd/klm	I <sub>max</sub>	2620cd	5	9.28
			2.62	105	

Power supply	Colour	2700K	3000K	3500K	4000K
500mA	●	<b>1E3621</b>	<b>1E3622</b>	<b>1E3623</b>	<b>1E3624</b>

## LED / 36W / GRAZING

	3000K	H(m)	D1(m)	D2(m)	E <sub>max</sub> (lx)
Ra80			80°	13°	
Fixture Power	36W	1	1.68	0.23	5707
Source Flux	5160lm	2	3.36	0.46	1427
Fixture Flux	2735lm	3	5.04	0.68	634
Efficacy	76lm/W	4	6.72	0.91	357
TS1091	I <sub>max</sub> =1106cd/klm	I <sub>max</sub>	5707cd	5	8.40
			1.14	228	

Power supply	Colour	2700K	3000K	3500K	4000K
500mA	●	<b>1E3625</b>	<b>1E3626</b>	<b>1E3627</b>	<b>1E3628</b>

## LED / 36W / WALL WASHER

	3000K	H(m)	D1(m)	D2(m)	E <sub>max</sub> (lx)
Ra80			116°	62°	
Fixture Power	36W	1	3.17	1.49	2879
Source Flux	5160lm	2	6.35	2.97	720
Fixture Flux	2926lm	3	9.52	4.46	320
Efficacy	81lm/W	4	12.70	5.95	180
TS1095	I <sub>max</sub> =671cd/klm	I <sub>max</sub>	3460cd	5	15.87
			7.43	115	

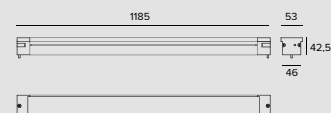
Power supply	Colour	2700K	3000K	3500K	4000K
500mA	●	<b>1E3629</b>	<b>1E3630</b>	<b>1E3631</b>	<b>1E3632</b>



# JEDI COMPACT



## Outdoor Recessed Louvre Remote driver L. 1185mm



### LED / 48W / FLOOD



	3000K	H(m)	D1(m)	D2(m)	Emax(lx)
Ra80			86°	29°	
Fixture Power	48W	1	1.86	0.52	3494
Source Flux	6880lm	2	3.71	1.05	873
Fixture Flux	3007lm	3	5.57	1.57	388
Efficacy	63lm/W	4	7.42	2.09	218
TS1087	Imax=508cd/klm	Imax	3494cd	5	9.28
				2.62	140

Power supply	Colour	2700K	3000K	3500K	4000K
500mA	●	<b>1E3645</b>	<b>1E3646</b>	<b>1E3647</b>	<b>1E3648</b>

### LED / 48W / GRAZING



	3000K	H(m)	D1(m)	D2(m)	Emax(lx)
Ra80			80°	13°	
Fixture Power	48W	1	1.68	0.23	7609
Source Flux	6880lm	2	3.36	0.46	1902
Fixture Flux	3646lm	3	5.04	0.68	845
Efficacy	76lm/W	4	6.72	0.91	476
TS1091	Imax=1106cd/klm	Imax	7609cd	5	8.40
				1.14	304

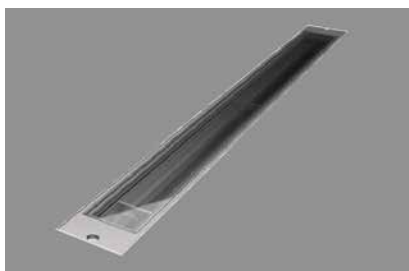
Power supply	Colour	2700K	3000K	3500K	4000K
500mA	●	<b>1E3649</b>	<b>1E3650</b>	<b>1E3651</b>	<b>1E3652</b>

### LED / 48W / WALL WASHER

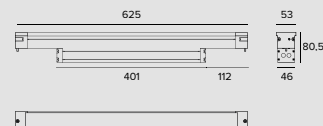


	3000K	H(m)	D1(m)	D2(m)	Emax(lx)
Ra80			116°	62°	
Fixture Power	48W	1	3.17	1.49	3838
Source Flux	6880lm	2	6.35	2.97	960
Fixture Flux	3901lm	3	9.52	4.46	426
Efficacy	81lm/W	4	12.70	5.95	240
TS1095	Imax=671cd/klm	Imax	4613cd	5	15.87
				7.43	154

Power supply	Colour	2700K	3000K	3500K	4000K
500mA	●	<b>1E3653</b>	<b>1E3654</b>	<b>1E3655</b>	<b>1E3656</b>



## Outdoor Recessed Integrated driver L. 625mm



### LED / 23W / SPOT



	3000K	H(m)	D(m)	Emax(lx)	
	Ra80		11°		
	Fixture Power	26W	1	0.20	39584
	Source Flux	3108lm	2	0.40	9896
	Fixture Flux	2575lm	3	0.59	4398
	Efficacy	99lm/W	4	0.79	2474
	TS1339 Imax=12736cd/klm	Imax	39584cd	5	0.99

Driver	Colour	2700K	3000K	3500K	4000K
EL	●	<b>1E3851EL</b>	<b>1E3852EL</b>	<b>1E3853EL</b>	<b>1E3854EL</b>
DALI	●	<b>1E3851DA</b>	<b>1E3852DA</b>	<b>1E3853DA</b>	<b>1E3854DA</b>



# JEDI COMPACT

## LED / 24W / FLOOD

	3000K	H(m)	D1(m)	D2(m)	E <sub>max</sub> (lx)
Ra80			85°	32°	
Fixture Power	28W	1	1.84	0.57	2406
Source Flux	3440lm	2	3.68	1.14	601
Fixture Flux	2570lm	3	5.52	1.70	267
Efficacy	92lm/W	4	7.36	2.27	150
TS1084	I <sub>max</sub> =699cd/klm	I <sub>max</sub>	2406cd	5	9.20 2.84 96

Driver	Colour	2700K	3000K	3500K	4000K
EL.	●	<b>1E3657EL</b>	<b>1E3658EL</b>	<b>1E3659EL</b>	<b>1E3660EL</b>
DALI	●	<b>1E3657DA</b>	<b>1E3658DA</b>	<b>1E3659DA</b>	<b>1E3660DA</b>

## LED / 24W / GRAZING

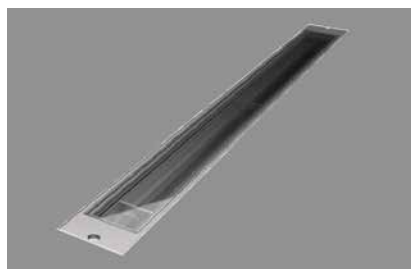
	3000K	H(m)	D1(m)	D2(m)	E <sub>max</sub> (lx)
Ra80			76°	15°	
Fixture Power	28W	1	1.55	0.26	5505
Source Flux	3440lm	2	3.10	0.51	1376
Fixture Flux	2858lm	3	4.65	0.77	612
Efficacy	102lm/W	4	6.21	1.02	344
TS1088	I <sub>max</sub> =1600cd/klm	I <sub>max</sub>	5505cd	5	7.76 1.28 220

Driver	Colour	2700K	3000K	3500K	4000K
EL.	●	<b>1E3661EL</b>	<b>1E3662EL</b>	<b>1E3663EL</b>	<b>1E3664EL</b>
DALI	●	<b>1E3661DA</b>	<b>1E3662DA</b>	<b>1E3663DA</b>	<b>1E3664DA</b>

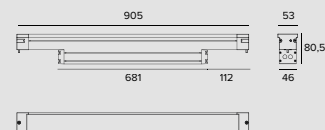
## LED / 24W / WALL WASHER

	3000K	H(m)	D1(m)	D2(m)	E <sub>max</sub> (lx)
Ra80			115°	59°	
Fixture Power	28W	1	3.12	1.34	2312
Source Flux	3440lm	2	6.23	2.67	578
Fixture Flux	2586lm	3	9.35	4.01	257
Efficacy	92lm/W	4	12.47	5.35	145
TS1092	I <sub>max</sub> =774cd/klm	I <sub>max</sub>	2661cd	5	15.59 6.69 92

Driver	Colour	2700K	3000K	3500K	4000K
EL.	●	<b>1E3665EL</b>	<b>1E3666EL</b>	<b>1E3667EL</b>	<b>1E3668EL</b>
DALI	●	<b>1E3665DA</b>	<b>1E3666DA</b>	<b>1E3667DA</b>	<b>1E3668DA</b>



**Outdoor Recessed  
Integrated driver  
L. 905mm**



## LED / 35W / SPOT

	3000K	H(m)	D(m)	E <sub>max</sub> (lx)	
	Ra80		11°		
	Fixture Power	38W	1	0.20	59376
	Source Flux	4662lm	2	0.40	14844
	Fixture Flux	3863lm	3	0.59	6597
	Efficacy	102lm/W	4	0.79	3711
	TS1339 Imax=12736cd/klm Imax	59376cd	5	0.99	2375

Driver	Colour	2700K	3000K	3500K	4000K
EL.	●	<b>1E3855EL</b>	<b>1E3856EL</b>	<b>1E3857EL</b>	<b>1E3858EL</b>
DALI	●	<b>1E3855DA</b>	<b>1E3856DA</b>	<b>1E3857DA</b>	<b>1E3858DA</b>

## LED / 36W / FLOOD

	3000K	H(m)	D1(m)	D2(m)	E <sub>max</sub> (lx)
Ra80			85°	32°	
Fixture Power	40W	1	1.84	0.57	3609
Source Flux	5160lm	2	3.68	1.14	902
Fixture Flux	3856lm	3	5.52	1.70	401
Efficacy	96lm/W	4	7.36	2.27	226
TS1085	I <sub>max</sub> =699cd/klm	I <sub>max</sub>	3609cd	5	9.20 2.84 144

Driver	Colour	2700K	3000K	3500K	4000K
EL.	●	<b>1E3681EL</b>	<b>1E3682EL</b>	<b>1E3683EL</b>	<b>1E3684EL</b>
DALI	●	<b>1E3681DA</b>	<b>1E3682DA</b>	<b>1E3683DA</b>	<b>1E3684DA</b>



# JEDI COMPACT

## LED / 36W / GRAZING



	3000K	H(m)	D1(m)	D2(m)	E <sub>max</sub> (lx)
Ra80			76°	15°	
Fixture Power	40W	1	1.55	0.26	8259
Source Flux	5160lm	2	3.10	0.51	2065
Fixture Flux	4288lm	3	4.65	0.77	918
Efficacy	107lm/W	4	6.21	1.02	516
TS1089	I <sub>max</sub> =1601cd/klm	I <sub>max</sub>	8259cd	5	7.76 1.28 330

Driver	Colour	2700K	3000K	3500K	4000K
EL.		<b>1E3685EL</b>	<b>1E3686EL</b>	<b>1E3687EL</b>	<b>1E3688EL</b>
DALI		<b>1E3685DA</b>	<b>1E3686DA</b>	<b>1E3687DA</b>	<b>1E3688DA</b>

## LED / 36W / WALL WASHER

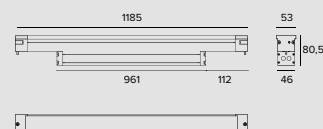


	3000K	H(m)	D1(m)	D2(m)	E <sub>max</sub> (lx)
Ra80			115°	59°	
Fixture Power	40W	1	3.12	1.34	3469
Source Flux	5160lm	2	6.23	2.67	867
Fixture Flux	3880lm	3	9.35	4.01	385
Efficacy	97lm/W	4	12.47	5.35	217
TS1093	I <sub>max</sub> =774cd/klm	I <sub>max</sub>	3992cd	5	15.59 6.69 139

Driver	Colour	2700K	3000K	3500K	4000K
EL.		<b>1E3689EL</b>	<b>1E3690EL</b>	<b>1E3691EL</b>	<b>1E3692EL</b>
DALI		<b>1E3689DA</b>	<b>1E3690DA</b>	<b>1E3691DA</b>	<b>1E3692DA</b>



## Outdoor Recessed Integrated driver L. 1185mm



## LED / 46W / SPOT



--

Driver	Colour	2700K	3000K	3500K	4000K
EL.		<b>1E3859EL</b>	<b>1E3860EL</b>	<b>1E3861EL</b>	<b>1E3862EL</b>
DALI		<b>1E3859DA</b>	<b>1E3860DA</b>	<b>1E3861DA</b>	<b>1E3862DA</b>

## LED / 48W / FLOOD



	3000K	H(m)	D1(m)	D2(m)	E <sub>max</sub> (lx)
Ra80			85°	32°	
Fixture Power	53W	1	1.84	0.57	4812
Source Flux	6880lm	2	3.68	1.14	1203
Fixture Flux	5141lm	3	5.52	1.70	535
Efficacy	97lm/W	4	7.36	2.27	301
TS1085	I <sub>max</sub> =699cd/klm	I <sub>max</sub>	4812cd	5	9.20 2.84 192

Driver	Colour	2700K	3000K	3500K	4000K
EL.		<b>1E3705EL</b>	<b>1E3706EL</b>	<b>1E3707EL</b>	<b>1E3708EL</b>
DALI		<b>1E3705DA</b>	<b>1E3706DA</b>	<b>1E3707DA</b>	<b>1E3708DA</b>

## LED / 48W / GRAZING



	3000K	H(m)	D1(m)	D2(m)	E <sub>max</sub> (lx)
Ra80			76°	15°	
Fixture Power	53W	1	1.55	0.26	11012
Source Flux	6880lm	2	3.10	0.51	2753
Fixture Flux	5717lm	3	4.65	0.77	1224
Efficacy	108lm/W	4	6.21	1.02	688
TS1089	I <sub>max</sub> =1601cd/klm	I <sub>max</sub>	11012cd	5	7.76 1.28 440

Driver	Colour	2700K	3000K	3500K	4000K
EL.		<b>1E3709EL</b>	<b>1E3710EL</b>	<b>1E3711EL</b>	<b>1E3712EL</b>
DALI		<b>1E3709DA</b>	<b>1E3710DA</b>	<b>1E3711DA</b>	<b>1E3712DA</b>

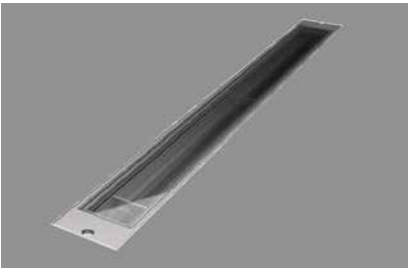


# JEDI COMPACT

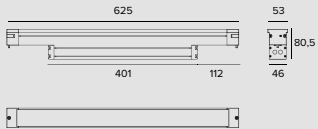
## LED / 48W / WALL WASHER

	3000K	H(m)	D1(m)	D2(m)	E <sub>max</sub> (lx)
Ra80			115°	59°	
Fixture Power	53W	1	3.12	1.34	4625
Source Flux	6880lm	2	6.23	2.67	1156
Fixture Flux	5173lm	3	9.35	4.01	514
Efficacy	98lm/W	4	12.47	5.35	289
TS1093	I <sub>max</sub> =774cd/klm	I <sub>max</sub>	5	15.59	6.69 185

Driver	Colour	2700K	3000K	3500K	4000K
EL.	●	<b>1E3713EL</b>	<b>1E3714EL</b>	<b>1E3715EL</b>	<b>1E3716EL</b>
DALI	●	<b>1E3713DA</b>	<b>1E3714DA</b>	<b>1E3715DA</b>	<b>1E3716DA</b>



### Outdoor Recessed Louvre Integrated driver L. 625mm



## LED / 24W / FLOOD

	3000K	H(m)	D1(m)	D2(m)	E <sub>max</sub> (lx)
Ra80			86°	29°	
Fixture Power	28W	1	1.86	0.52	1747
Source Flux	3440lm	2	3.71	1.05	437
Fixture Flux	1503lm	3	5.57	1.57	194
Efficacy	54lm/W	4	7.42	2.09	109
TS1086	I <sub>max</sub> =508cd/klm	I <sub>max</sub>	5	9.28	2.62 70

Driver	Colour	2700K	3000K	3500K	4000K
EL.	●	<b>1E3669EL</b>	<b>1E3670EL</b>	<b>1E3671EL</b>	<b>1E3672EL</b>
DALI	●	<b>1E3669DA</b>	<b>1E3670DA</b>	<b>1E3671DA</b>	<b>1E3672DA</b>

## LED / 24W / GRAZING

	3000K	H(m)	D1(m)	D2(m)	E <sub>max</sub> (lx)
Ra80			80°	13°	
Fixture Power	28W	1	1.68	0.23	3805
Source Flux	3440lm	2	3.36	0.46	951
Fixture Flux	1824lm	3	5.04	0.68	423
Efficacy	65lm/W	4	6.72	0.91	238
TS1090	I <sub>max</sub> =1106cd/klm	I <sub>max</sub>	5	8.40	1.14 152

Driver	Colour	2700K	3000K	3500K	4000K
EL.	●	<b>1E3673EL</b>	<b>1E3674EL</b>	<b>1E3675EL</b>	<b>1E3676EL</b>
DALI	●	<b>1E3673DA</b>	<b>1E3674DA</b>	<b>1E3675DA</b>	<b>1E3676DA</b>

## LED / 24W / WALL WASHER

	3000K	H(m)	D1(m)	D2(m)	E <sub>max</sub> (lx)
Ra80			116°	62°	
Fixture Power	28W	1	3.17	1.49	1919
Source Flux	3440lm	2	6.35	2.97	480
Fixture Flux	1950lm	3	9.52	4.46	213
Efficacy	70lm/W	4	12.70	5.95	120
TS1094	I <sub>max</sub> =671cd/klm	I <sub>max</sub>	5	15.87	7.43 77

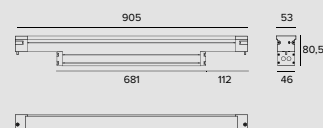
Driver	Colour	2700K	3000K	3500K	4000K
EL.	●	<b>1E3677EL</b>	<b>1E3678EL</b>	<b>1E3679EL</b>	<b>1E3680EL</b>
DALI	●	<b>1E3677DA</b>	<b>1E3678DA</b>	<b>1E3679DA</b>	<b>1E3680DA</b>



# JEDI COMPACT



## Outdoor Recessed Louvre Integrated driver L. 905mm



### LED / 36W / FLOOD



	3000K	H(m)	D1(m)	D2(m)	Emax(lx)
Ra80		86°	29°		
Fixture Power	40W	1	1.86	0.52	2620
Source Flux	5160lm	2	3.71	1.05	655
Fixture Flux	2255lm	3	5.57	1.57	291
Efficacy	56lm/W	4	7.42	2.09	164
TS1087	Imax=508cd/klm	Imax	5	9.28	2.62 105

Driver	Colour	2700K	3000K	3500K	4000K
EL.	●	<b>1E3693EL</b>	<b>1E3694EL</b>	<b>1E3695EL</b>	<b>1E3696EL</b>
DALI	●	<b>1E3693DA</b>	<b>1E3694DA</b>	<b>1E3695DA</b>	<b>1E3696DA</b>

### LED / 36W / GRAZING



	3000K	H(m)	D1(m)	D2(m)	Emax(lx)
Ra80		80°	13°		
Fixture Power	40W	1	1.68	0.23	5707
Source Flux	5160lm	2	3.36	0.46	1427
Fixture Flux	2735lm	3	5.04	0.68	634
Efficacy	68lm/W	4	6.72	0.91	357
TS1091	Imax=1106cd/klm	Imax	5	8.40	1.14 228

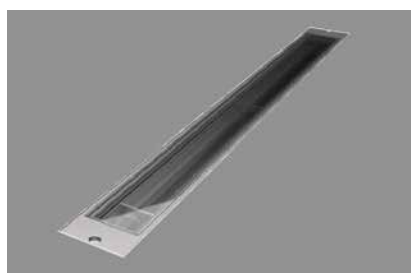
Driver	Colour	2700K	3000K	3500K	4000K
EL.	●	<b>1E3697EL</b>	<b>1E3698EL</b>	<b>1E3699EL</b>	<b>1E3700EL</b>
DALI	●	<b>1E3697DA</b>	<b>1E3698DA</b>	<b>1E3699DA</b>	<b>1E3700DA</b>

### LED / 36W / WALL WASHER

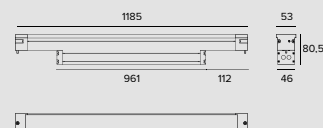


	3000K	H(m)	D1(m)	D2(m)	Emax(lx)
Ra80		116°	62°		
Fixture Power	40W	1	3.17	1.49	2879
Source Flux	5160lm	2	6.35	2.97	720
Fixture Flux	2926lm	3	9.52	4.46	320
Efficacy	73lm/W	4	12.70	5.95	180
TS1095	Imax=671cd/klm	Imax	5	15.87	7.43 115

Driver	Colour	2700K	3000K	3500K	4000K
EL.	●	<b>1E3701EL</b>	<b>1E3702EL</b>	<b>1E3703EL</b>	<b>1E3704EL</b>
DALI	●	<b>1E3701DA</b>	<b>1E3702DA</b>	<b>1E3703DA</b>	<b>1E3704DA</b>



## Outdoor Recessed Louvre Integrated driver L. 1185mm



### LED / 48W / FLOOD



	3000K	H(m)	D1(m)	D2(m)	Emax(lx)
Ra80		86°	29°		
Fixture Power	53W	1	1.86	0.52	3494
Source Flux	6880lm	2	3.71	1.05	873
Fixture Flux	3007lm	3	5.57	1.57	388
Efficacy	57lm/W	4	7.42	2.09	218
TS1087	Imax=508cd/klm	Imax	5	9.28	2.62 140

Driver	Colour	2700K	3000K	3500K	4000K
EL.	●	<b>1E3717EL</b>	<b>1E3718EL</b>	<b>1E3719EL</b>	<b>1E3720EL</b>
DALI	●	<b>1E3717DA</b>	<b>1E3718DA</b>	<b>1E3719DA</b>	<b>1E3720DA</b>







# JEDI COMPACT



Code
<b>1E3559</b>
DALI power supply version kit composed of an aluminium watertight box (LxHxP=486x49,5x44mm) complete with power supply input cable (1 metre, type H07RN8-F, 5G1mm <sup>2</sup> ) and an output cable to the fixture (1 metre, type H07RN8-F, 3G1mm <sup>2</sup> ). For the L 312.5/344/593.5/625mm versions.




Code
<b>1E3560</b>
DALI power supply version kit composed of an aluminium watertight box (LxHxP=486x49,5x44mm) complete with power supply input cable (1 metre, type H07RN8-F, 5G1mm <sup>2</sup> ) and an output cable to the fixture (1 metre, type H07RN8-F, 3G1mm <sup>2</sup> ). For the L 873.5/905/1153.5/1185mm versions.


## Note



The drivers selected by Targetti make the fixtures “Safe Flicker”.

## Accessories

<b>Tool</b>

Code
<b>1E3305</b>
(Tightening) wrench for the connector kit.

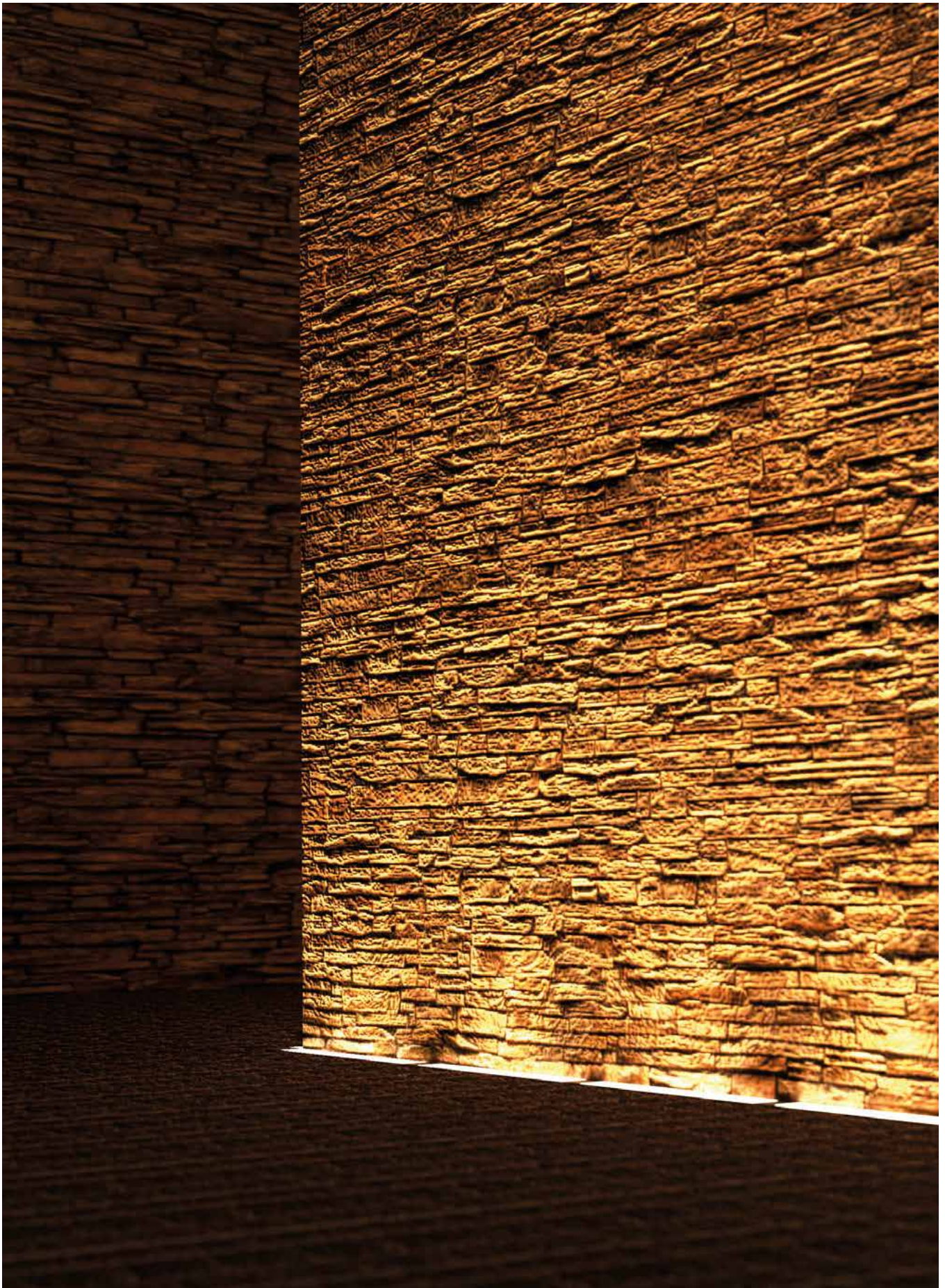
<b>Connector</b>	
	
Code	Code
<b>1E2769</b>	<b>1E2494</b>
Linear connection box IP66/IP68. 5 poles max. wire section 1.5mm <sup>2</sup> . Cable diameter range from 7 to 12mm.	Multiple connection box IP68. 1 IN - 3 OUT 4 poles max. wire section 2.5mm <sup>2</sup> . Cable diameter range from 6 to 12mm.


Code
<b>1E3184</b>
IP68 4-way cable connector (5 pole).

<b>Control systems</b>	
	
Code	Code
<b>1E3048</b>	<b>1E3049</b>
A IP67 Module for individual control of external devices equipped with DALI drivers. The module needs to be positioned in order to receive radio signals. The distance to the lighting fixtures can reach up to 50m. Wireless control via the Casambi application. LxHxP=56.5x22.3x35.8mm.	IP67 Extender for wireless control of DALI fixtures. It generates a local DALI bus with the capacity to drive up to 64 fixtures. Can control DALI fixtures in outdoor applications via the Casambi application. LxHxP=150x40x148mm.

## Outdoor







## Requisites and information

All fixtures of the Targetti collection have been designed and produced to comply with European Standard EN60598-1 relative to the safety requisite of light fixtures.



All fixtures comply with the following directives:

- EMC Directive 2014/30/EU
- LV Directive 2014/35/EU
- RoHS Directive 2011/65/EU

## Unless specified otherwise

- all fixtures are supplied without lamps;
- all fixtures are sold separately;
- all measurements are expressed in millimeters;
- all fixtures at low voltage are supplied without transformer;
- For products in Class III performance is only guaranteed using the electronic power supplies and drivers indicated in the catalogue.

## Consorzio ecolight

Targetti Sankey Spa is a member of the Ecolight consortium that was set up in 2004 (D.Lgs. 49/2014) to comply with the provisions of the European Directive that was adopted in Italy as the European Directive 2012/19/EU for WEEE on managing, recovering and treating waste electrical and electronic equipment, used batteries and accumulators in compliance with all applicable legislation.

The colors of the products illustrated are reproduced as faithfully as possible compatibly with the technical limitations of the printed medium. The company reserves the right to make changes to the production without notice. Reproduction of this catalogue or any part of it is prohibited. The products illustrated in this catalogue are covered by one or more Italian or international patents. The company will take legal action against any imitators.



### TARGETTI SANKEY SpA

Certificated ISO 9001 n° 9130. TAR1  
Certificated ISO 14001 n° IT319206

The Enec mark, ISO9001 and ISO14001 certifications and the CE marking all guarantee that the activities carried out internally in the company are governed and controlled by procedures which assure constant level of quality.

Accredited laboratory in accordance with ISO 17025.

## Light beam apertures

from	to	beam	
5°	10°	Narrow Spot	<b>NSP</b>
11°	25°	Spot	<b>SP</b>
26°	40°	Flood	<b>FL</b>
41°	50°	Medium Wide Flood	<b>MWFL</b>
51°	70°	Wide Flood	<b>WFL</b>
71°	120°	Very Wide Flood	<b>VWFL</b>
		Wall Washer	<b>WW</b>
		Narrow Asymmetric	<b>N. ASYM</b>
		Asymmetric	<b>ASYM</b>



## Icons legend

	Class I luminaire in which the protection against electrical shock is guaranteed by the connections of the conductive elements accessible to a protective conductor (earth connection).
	Luminaire in which the connection to a protective conductor (earth connection) guarantees the immunity to radio noises.
	Class II luminaire (double insulation), protected against the accidental contact with parts under tension from the user.
	Class III luminaire, suitable for connection to very low voltage circuits.
	Solid particle and liquid ingress protection degree.
	Protection degree - Recessed part . Protection degree - Exposed part.
	Impact protection degree.
	ENEC European Norms Electrical Certification.

## Particular symbols

	Weight of the single fixture.
	Cable length.
	Walk-over.
	Driver-over safe.
	Fixtures that have parameters below the minimum visibility threshold $PstLM \leq 1$ and $SVM \leq 0.4$ (IEC TR 61547-1 and IEC TR 63158).
<b>DBS</b>	Dynamic Beam Shaper optical technology with remote management of the beam opening.
	LED with $Ra_{\_\_}$ where not present in the catalogue, available on request.
	Different colour temperatures available on request.
	Custom finish of your choice from the Targetti Colours range and RAL indicated in the colour chart can be downloaded on line from the download section.
	Treatment carried out on request.
	Supplied on request with an integrated or remote 110-277Vac power supply as indicated for the standard model.
	LED version with a different "Tunable White" tone available on request.

### Note

- Please contact us for on demand treatments and versions.
- The performances reported on the products refer to the use of the recommended drivers.
- The drivers selected by Targetti make the fixtures "Safe Flicker".



