

RECESSED FLOOR PROFILES: P05G

CHARACTERISTICS

Recessed floor profile complete with a PMMA profile to house LED strips.

CAN BE USED WITH LED STRIPS WITH MAXIMUM WIDTH:

13 mm.

MAXIMUM POWER:

20W/m

MATERIALS

6063 aluminium profile with white PMMA screen.

ACCESSORIES INCLUDED

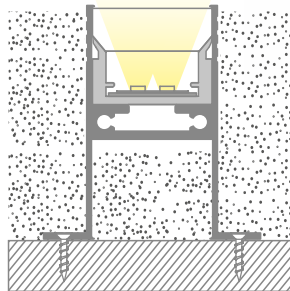
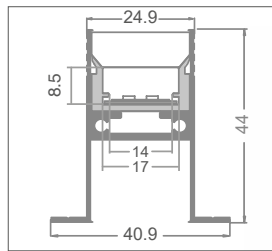
Every 3 metre bar is complete with 3 sets of end caps (with and without hole) for the PMMA profile and 3 sets of metal end caps for the aluminium profile.

INSTALLATION

Recessed. Cabling can be in line with the profile or exit the bottom of the profile.

PACKAGE

Supplied in packages of 5 bars, each one measuring 3 meters complete with screen and accessories. Spare accessories available with separate code.



The strip is attached to the aluminium guide for precise and quick insertion

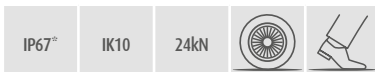


Cutting Project profiles to size*:

fixed cost of piece work

VA04

* Includes mounting accessories.



art	Description	L1	H	L	8011905	1 / 5
P05G-S-PF-300	profile complete with PMMA screen + guide and accessories	40,9	44	3000	913564	1 / 5



*The profiles reach IP67 if sealed correctly.



art	Description	8011905	1
P05G-A-ECP	3+3 PC end caps for the PMMA profile	913571	1



art	Description	8011905	1
P05G-A-ECM	3 sets of metal end caps	913588	1