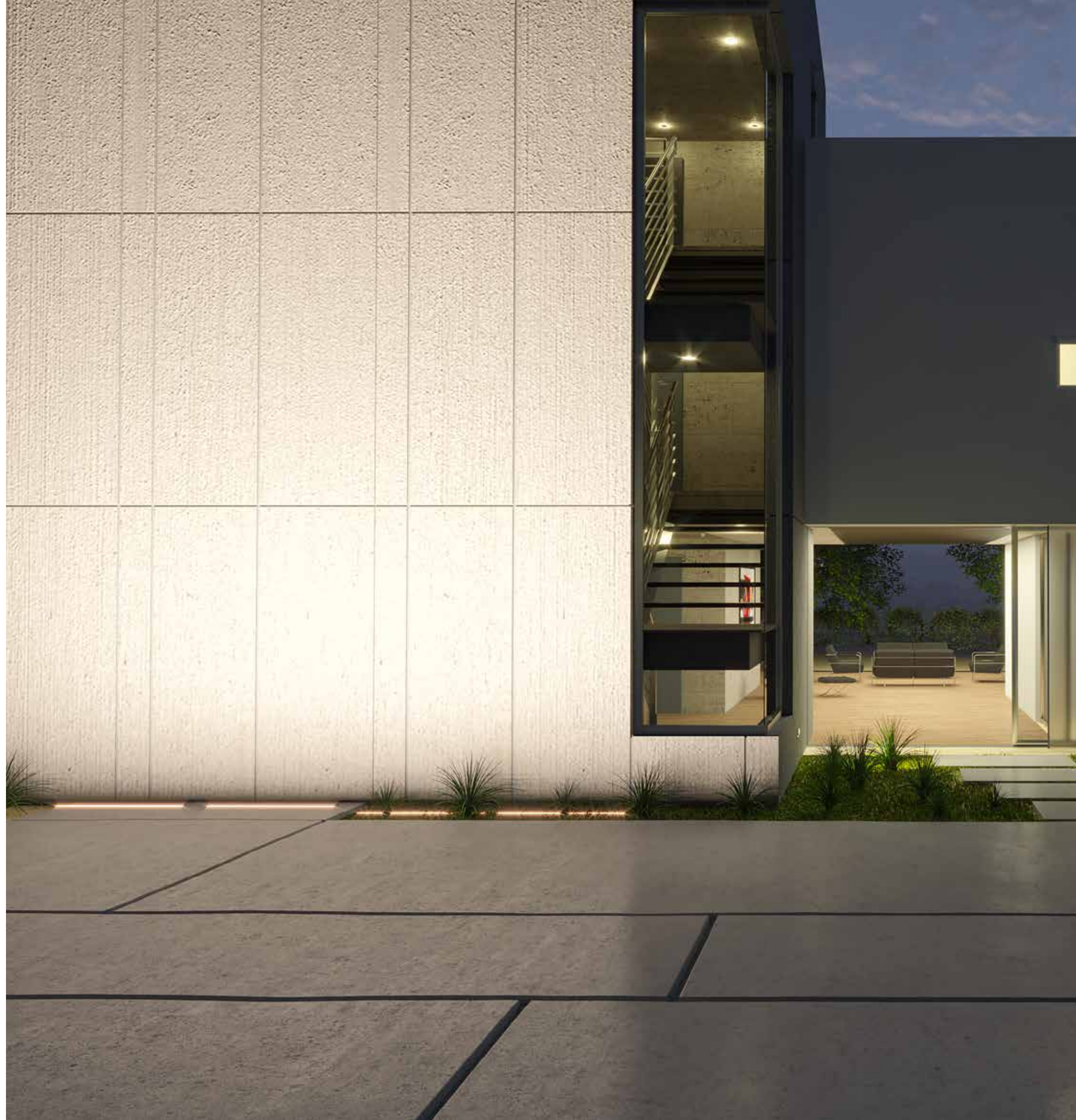


JEDI

The Jedi range of linear projectors is ideal for architectural lighting of large surfaces. Available in a wide range of sizes, performances, and lighting effects in booth projector and recessed versions.





Jedi and Jedi Compact offer two size ranges of professional linear fixtures for indoor and outdoor lighting application with complete installation flexibility.

Photographer Ivan Rossi
Engineer Maurizio Russo, Mario Di Paola
Electrical Engineer SIEC Srl

Università LUMSA, Roma, Italy
Architect Giuseppe Manara & Partners

JEDI

Jedi is reliable, high performance linear outdoor fixture. Its numerous lighting effects, installation flexibility, three different lengths, and ability to blend easily into the architecture make it an indispensable tool for lighting large surfaces.

Jedi is available with two lumen packages for each length (HI-POWER and LOW-POWER), and the different lengths have proportionate lumen packages. The same amount of light per linear meter allows each surface to be illuminated uniformly, regardless of the length of the products used.

Jedi is also available in an RGBW quad chip version.



Jedi Recessed



Jedi Projektor

JEDI Compact

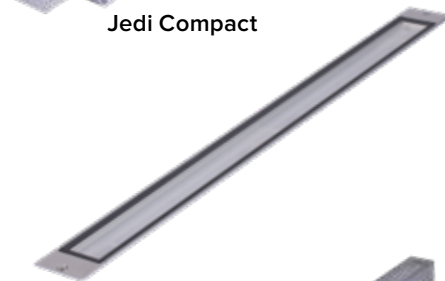
Jedi Compact is the flexible, high-performance fixture suitable for installation in small grooves or on particularly thin cornices for outdoor and indoor applications. Based on the optics chosen, it is ideal for general lighting of walking areas, vaults, or vertical surfaces.

Outdoor versions available for recessed or surface installation and also as RGBW quad chip versions.

Jedi Compact Indoor, available as projector versions, features a neat and refined design and offers professional performances and multiple lighting effects.



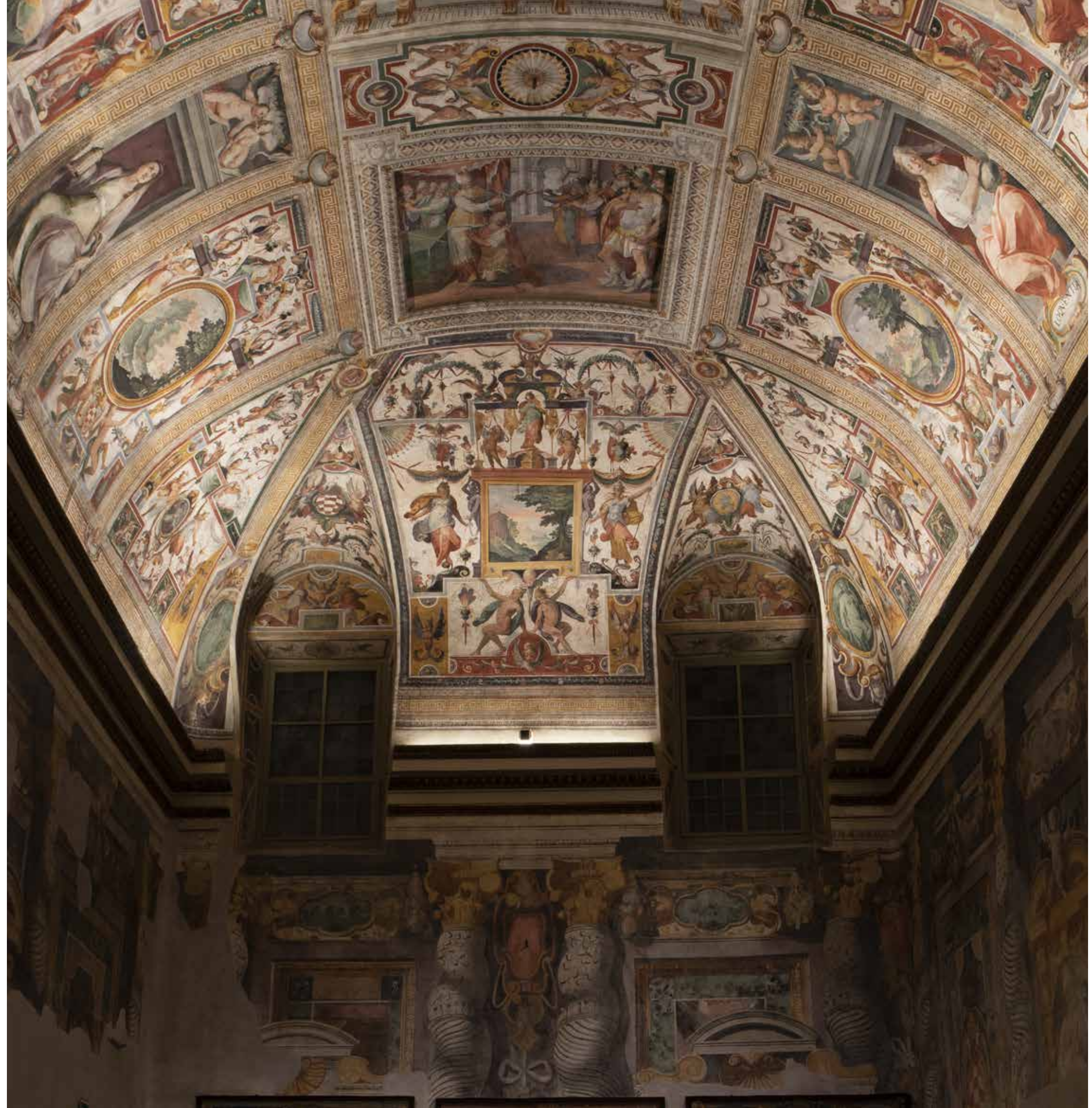
Jedi Compact



Jedi Compact Recessed



Jedi Compact Indoor



Photography Alessandro Maurelli

Sala Zuccari, Palazzo Giustiniani, Roma, Italy

Features for JEDI and JEDI Compact



Water resistant

The recessed versions feature all the major protection ratings, including IP69. Therefore, they benefit from the highest water protection, making them suitable for installations in urban areas where cleaning with high-pressure jets is required.

The entire range uses a “Waterblock smart” connector system to ensure a perfectly sealed fixture connection. The waterblock system eliminates the possibility of humidity or moisture entering through the cable into the fixture. The cable is further protected with a resined connector and adhesive sheath for a completely sealed system.



Resistant to corrosion

The Jedi and Jedi Compact housings include marine grade protection making them corrosion resistant making them suitable for use in marine grade environments and may be installed up to 5M from the sea. Stainless Steel trim brushed finished surfaces may need to be cleaned occasionally to prevent collection of mineral deposits. Not to be in direct contact with salt or corrosive agents for extended periods of time.



Array of LED sources

The Jedi and Jedi Compact range is available in different color temperatures, as RGBW quad chip versions and on request it is also possible to have versions with Tunable White LEDs or other customized color temperatures (2400K).



Simplicity in light management

The entire JEDI and JEDI Compact range is available in ON-OFF electronic version and DALI version. DALI driver versions can be controlled with the CASAMBI app if equipped with a specific accessory. A simple smartphone is all that is needed to create and manage any lighting scene

JEDI Compact - Wall Washer optic



Mural Artist Dixie Friend Gay
Photography Brandon Huttenlocher / Design Workshop, Inc

Midtown Park, Houston, USA
Landscape architect Design Workshop, Inc



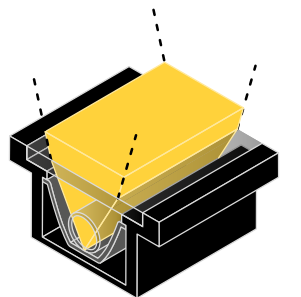
Optical systems

Targetti Optic Division designs and manufactures its own optics, starting from the desired effect and building them around the light source chosen for our fixtures. For this reason we are able to optimize the performance of the source and achieve effects of absolute precision. For each of our optical systems, the quality of the lighting effect, which can be varied in different gradients of shading, is an essential characteristic.

Jedi and Jedi Compact offer two optical systems: HYBRID and with LENSES, which create different lighting effects. Grazing light (grazing), uniform illumination on large and high surfaces (wall washer), and more focused effects (flood and spot).

Hybrid optics

The patented hybrid optic system features a linear LED board with a primary cylindrical glass lens combined with a high reflectance anodized aluminum reflector and a holographic filter that softens the emission.

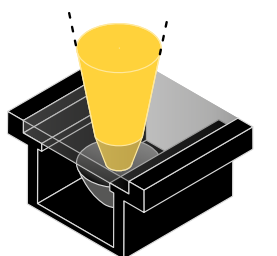


Available for JEDI and JEDI Compact in beam apertures:

- FLOOD
- GRAZING
- WALL WASHER

Optics with lens

Jedi range can also be equipped with acrylic lenses positioned on each individual LED emitter for an extremely narrow and controlled beam. This optic system produces clean vertical emissions reducing lateral spillage along the length of the fixture.

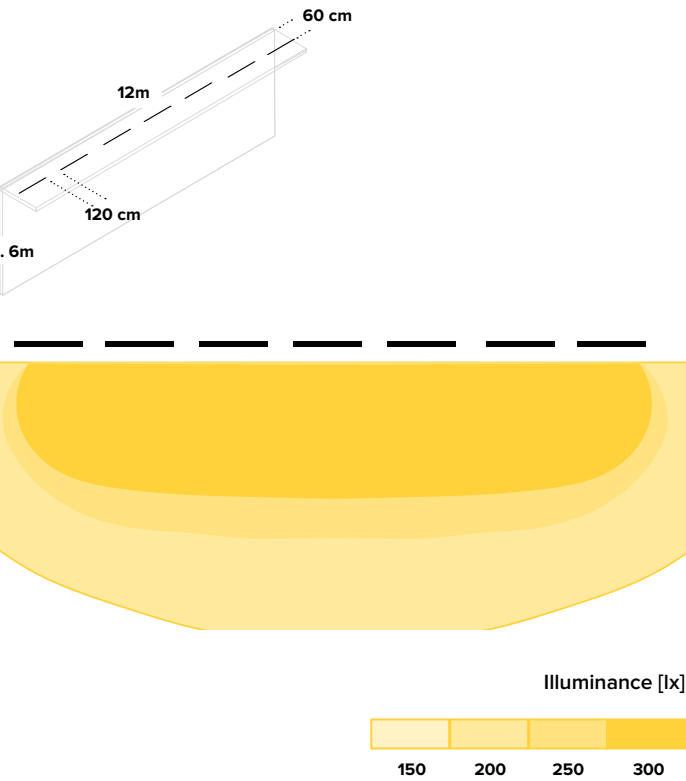


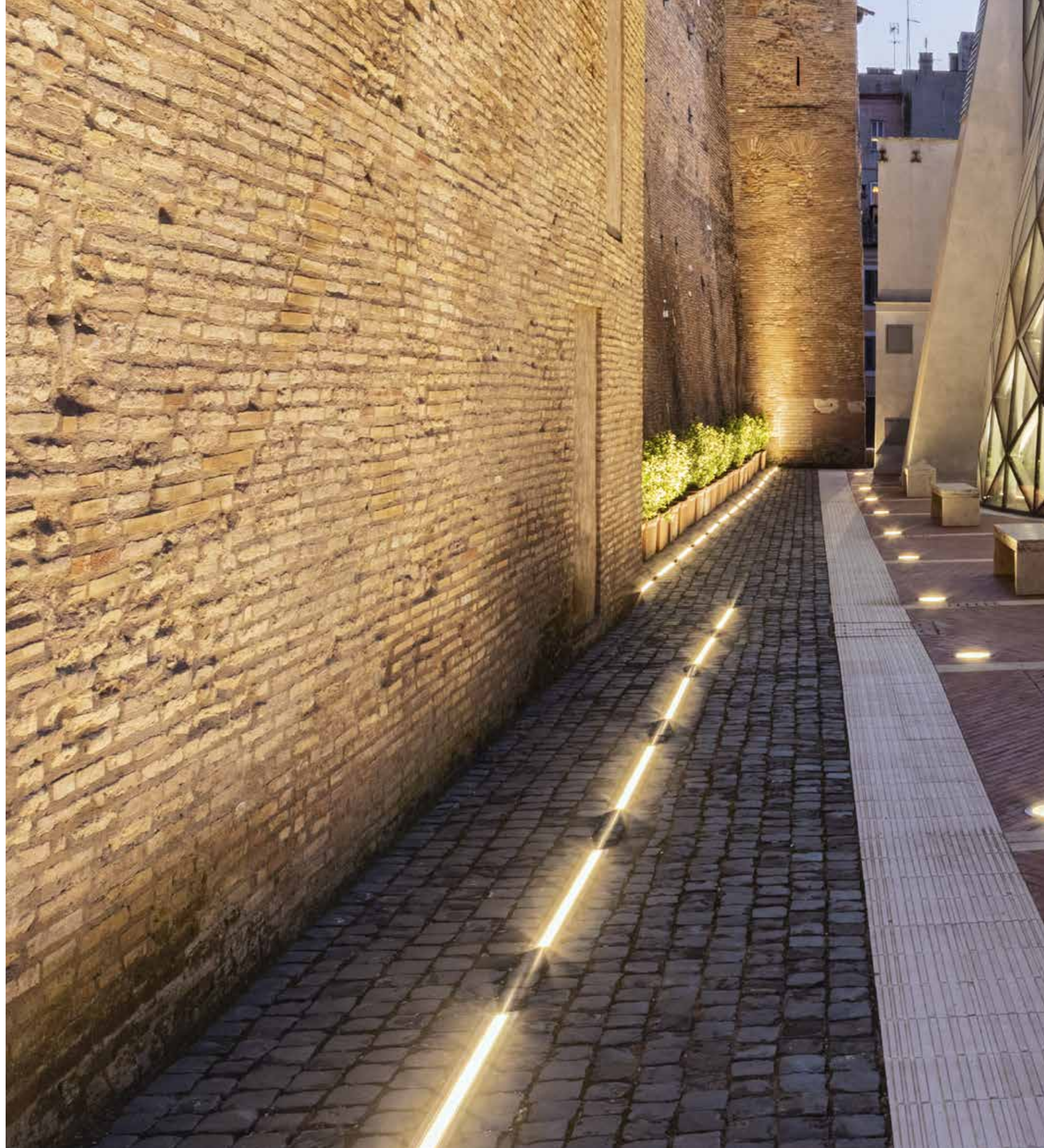
Available for JEDI and JEDI Compact in beam apertures:

- SPOT

GRAZING OPTIC

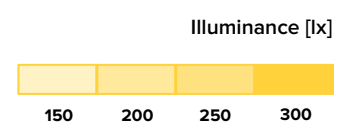
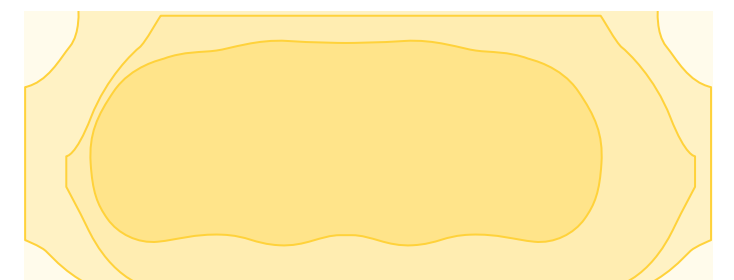
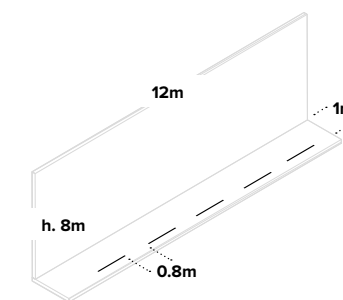
The Grazing hybrid optic is perfect for enhancing and highlighting a texture. To optimize the effect, the fixtures must be installed near the surface to be lit close together or in a continuous line.





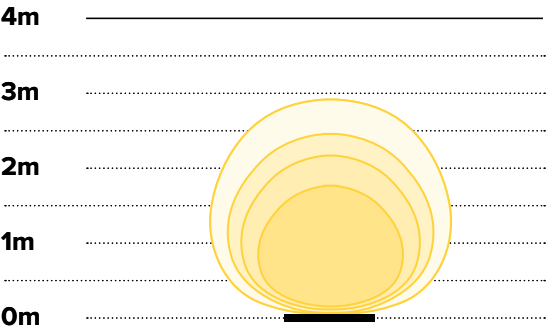
WALL WASHER OPTIC

The Wall Washer hybrid optic allows uniform and consistent lighting of wide surfaces.



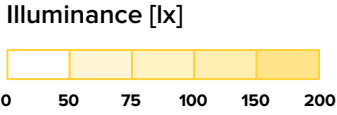
FLOOD OPTIC

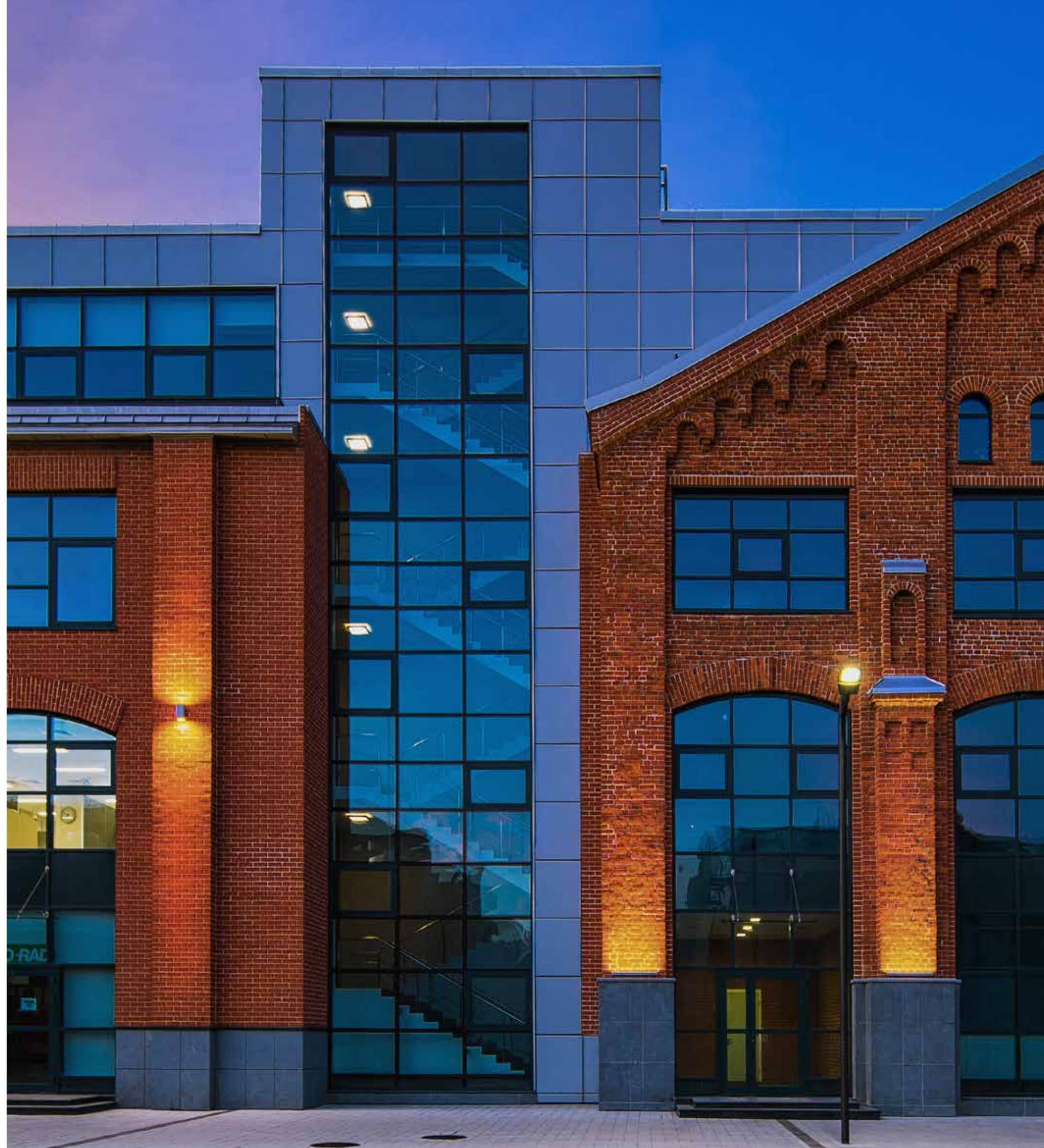
The Flood optic is ideal for lighting moldings on a façade with a soft lighting effect. On the orizontal plane to the fixture it features narrow emission that maximizes efficiency on the illuminated surface. On the vertical plane the emission is wide yet controlled to focus on specific elements.



FL
Beam Angle 85°x32°
fixture flux 5111lm
Imax 4784cd

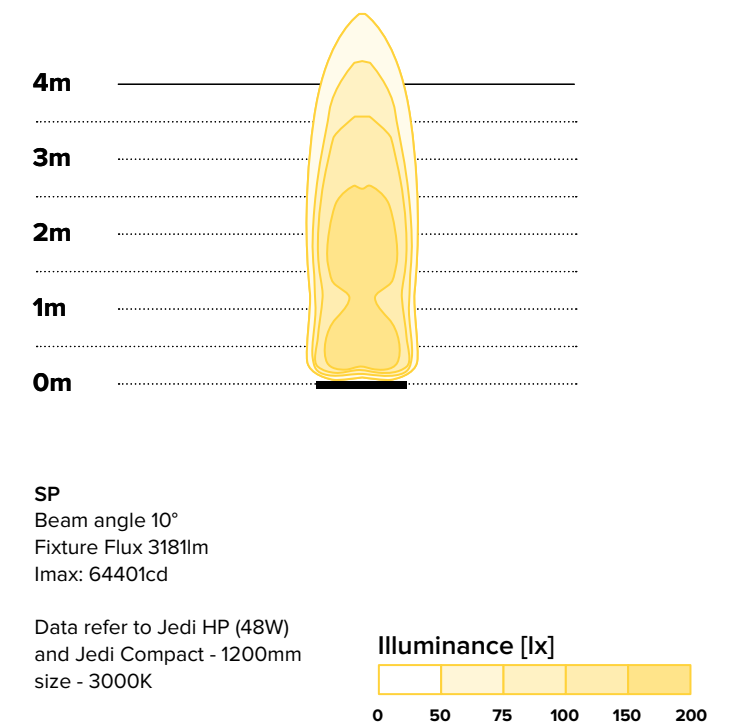
Data refer to Jedi HP
(48W) and Jedi Compact -
1200mm size - 3000K





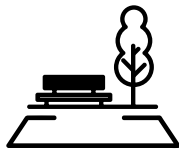
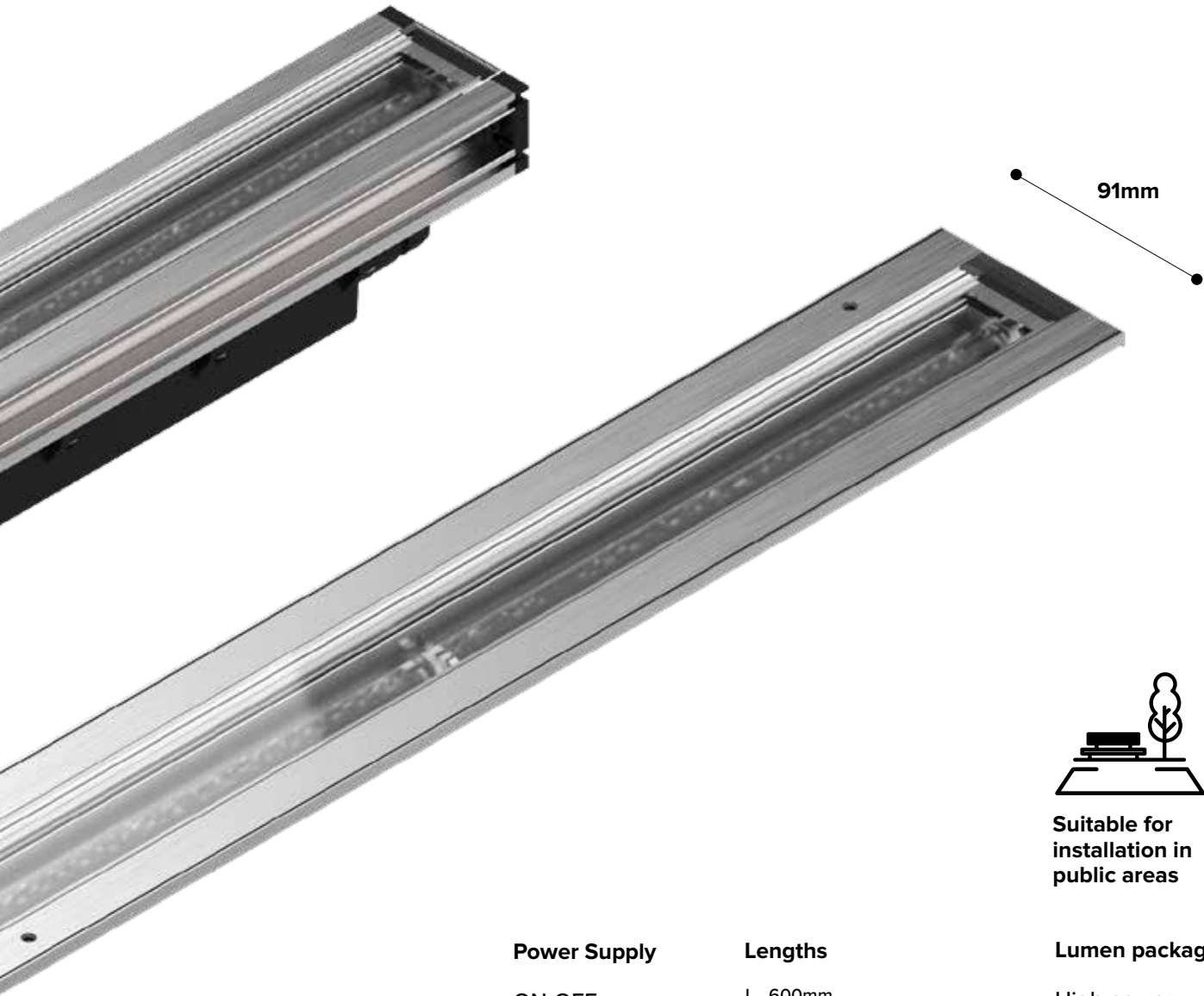
SPOT OPTIC

The Spot optic provides concentrated emission, perfect for highlighting architectural elements. The precise and narrow beam with a controlled cut off making Jedi the ideal professional solution for projected light.



JEDI

OUTDOOR SOLUTION



Suitable for
installation in
public areas



Recessed	Projector
<div> <div></div> <div>IK08</div> <div>IP66</div> <div>IP67</div> </div>	<div> <div></div> <div>IK10</div> <div>IP66</div> <div>IP67</div> <div>IP68</div> <div>IP69</div> </div>

Power Supply

ON-OFF
DALI
CASAMBI

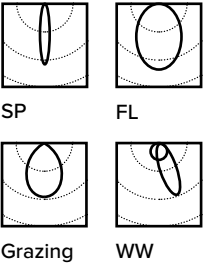
On demand

Tunable White
2400K
110-277Vac

Lengths

- L 600mm
- L 900mm
- L 1200mm

Optics



Lumen packages

High power
Low power

Colour temperature



PROPORTIONATE LUMEN PACKAGE

Jedi is available with two lumen packages for each length (HI-POWER and LOW-POWER), and the different lengths have proportionate lumen packages. The same amount of light per linear meter allows each surface to be illuminated uniformly, regardless of the length of the products used.

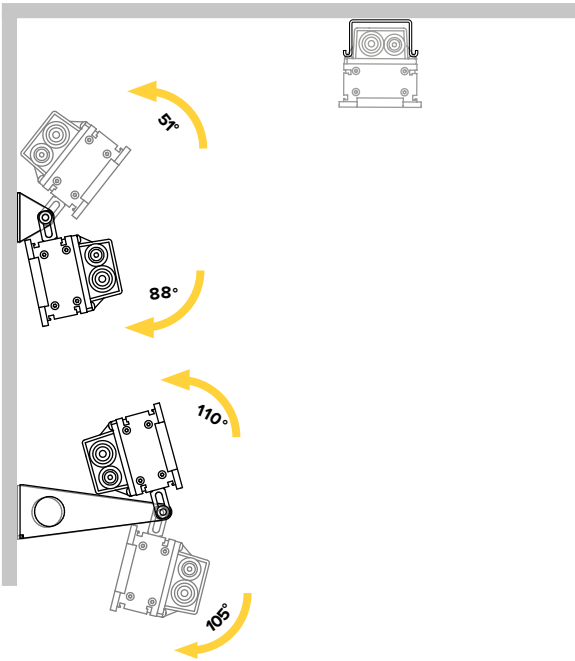


LIGHT LINE

The glass of JEDI covers the entire length of the fixture, allowing for an uninterrupted line of light in the case of continuous row installations.

QUICK CONNECTION

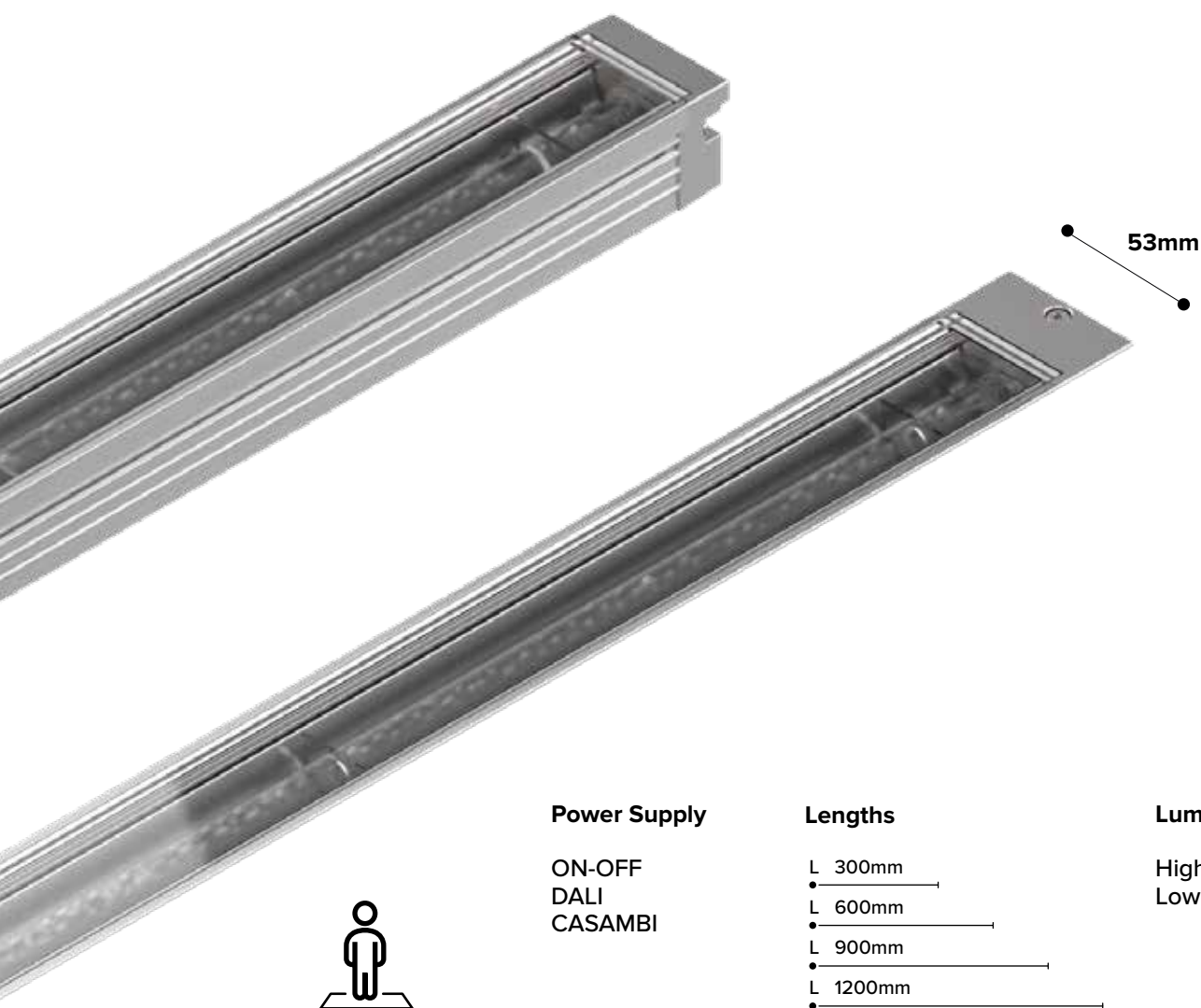
The housing is completely sealed and features an external electrical connection through IP68 connectors for a Plug & Light quick installation. Continuous line installation is possible by using specific accessories.



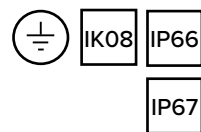
INSTALLATION FLEXIBILITY

For installation on vertical and horizontal surfaces, JEDI must be equipped with adjustable brackets available in two different lengths. The great advantage of JEDI lies in the possibility of sliding the brackets along the body without any constraints so as to have no limits when installing on facades or under eaves.

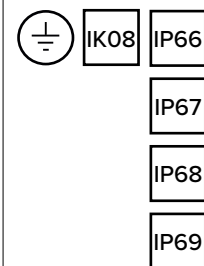
JEDI COMPACT



Recessed



Projector



Power Supply

ON-OFF
DALI
CASAMBI

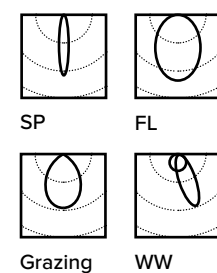
On demand

Tunable White
2400K
110-277Vac

Lengths

- L 300mm
- L 600mm
- L 900mm
- L 1200mm

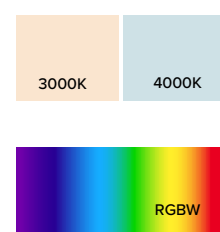
Optics



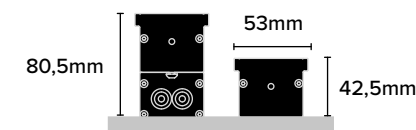
Lumen packages

High power
Low power

Colour temperature



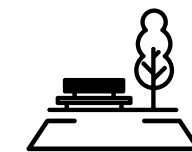
COMPACT DIMENSIONS



There are two bodies to choose from depending on the installation: with a remote driver where it is necessary to have a compact profile and a very limited installation depth, or with an integrated driver.

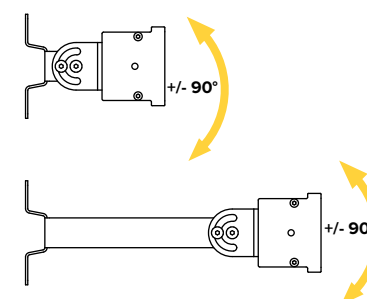
ANTI GLARE SOLUTIONS

When it is necessary to reduce glare, all versions, with the exception of those with Spot optics, can be provided internally equipped with the Louvre grid that limits lateral emission.



SUITABLE FOR INSTALLATION IN PUBLIC AREAS

The recessed version is equipped with high-strength vandal-proof screws that protect against tampering. They are made of stainless steel to maintain the high corrosion resistance of the fixture.



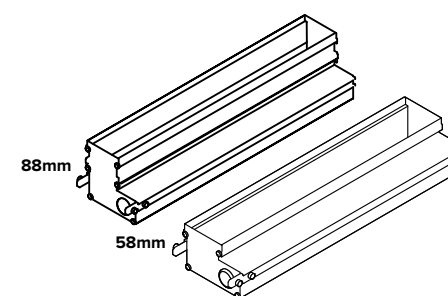
INSTALLATION FLEXIBILITY

Projector

Thanks to the special installation brackets, available in two different lengths, it is possible to rotate Jedi Compact Outdoor from -90° to + 90° and lock the aiming with an Allen key for maximum reliability during the installation phase.

Recessed

For recessed versions, it is possible to choose between two different installation housing with two depths of recess, depending on the type of body chosen, with integrated driver (88mm depth) or without (58mm depth).



Optical accessory solutions

All outdoor versions of Jedi Compact can be ordered already equipped with an anti-glare Louvre - in FLOOD, GRAZING, and WALL WASHER optics. This solution was developed to allow for beam focusing by converging the light emission along the horizontal plane. Where there is a need to further reduce the risk of glare, it is possible to accessorize the indoor and outdoor projector versions with a symmetrical anti-glare grid for SPOT, FLOOD, and GRAZING versions or an asymmetrical grid for WALL WASHER versions. These can be ordered as accessories.

Photographer Ivan Rossi
Engineer Maurizio Russo, Mario Di Paola
Electrical Engineer SIEC Srl

Università LUMSA, Roma, Italy
Architect Giuseppe Manara & Partners



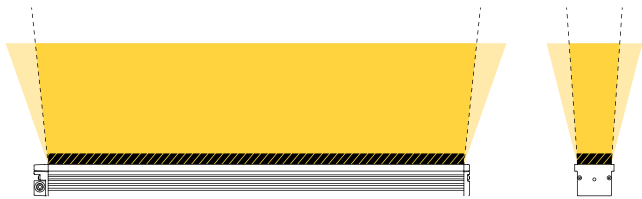
Integrated Louvre grid

Solutions with integrated Louvre grid to limit transversal glare available for outdoor versions.



Anti-glare symmetric grid

Available as an accessory for the versions of Jedi Compact Indoor (internal installation) and Jedi Compact Outdoor projector (external installation) to limit both longitudinal and transversal glare.

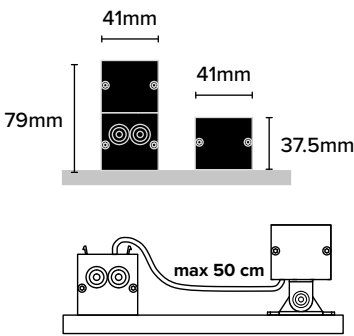


Anti-glare asymmetric grid

Available as an accessory for the projector versions of Jedi Compact Indoor (indoor installation) and Jedi Compact Outdoor (outdoor installation) to limit transverse glare. Particularly suitable for Grazing and Wall Washer optical systems.



JEDI COMPACT

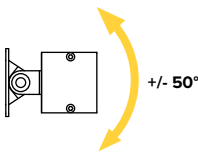


DIMENSIONI COMPATTE

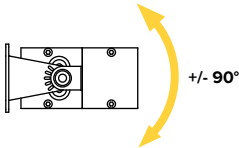
The Jedi Compact Indoor profile is just 4cmx4cm allowing for installation in very tiny spaces. The driver can be hooked under the body or remotet at a maximum distance of 50cm. This facilitates installation in the case of particularly thin frames or small grooves. The 300mm version is only available with remote driver.

WIDE INSTALLATION FLEXIBILITY

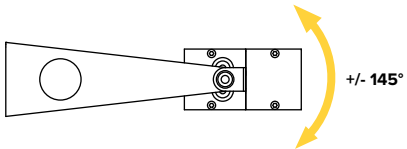
The Indoor versions can be equipped with three different types of brackets so as to adapt the product to any type of installation.



Short bracket
For surface installation
(remote driver versions)



Short bracket
For surface installation
(Integrated removable driver versions)



Long bracket
For surface installation
(Integrated removable driver versions)

JEDI Compact indoor Grazing optic

Power Supply

ON-OFF
DALI
CASAMBI

Lengths

- L 300mm
- L 600mm
- L 900mm
- L 1200mm

Lumen packages

High power
Low power

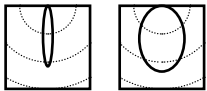
Projector



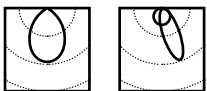
On demand

Tunable White
2400K
110-277Vac

Optics

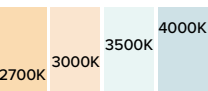


SP FL



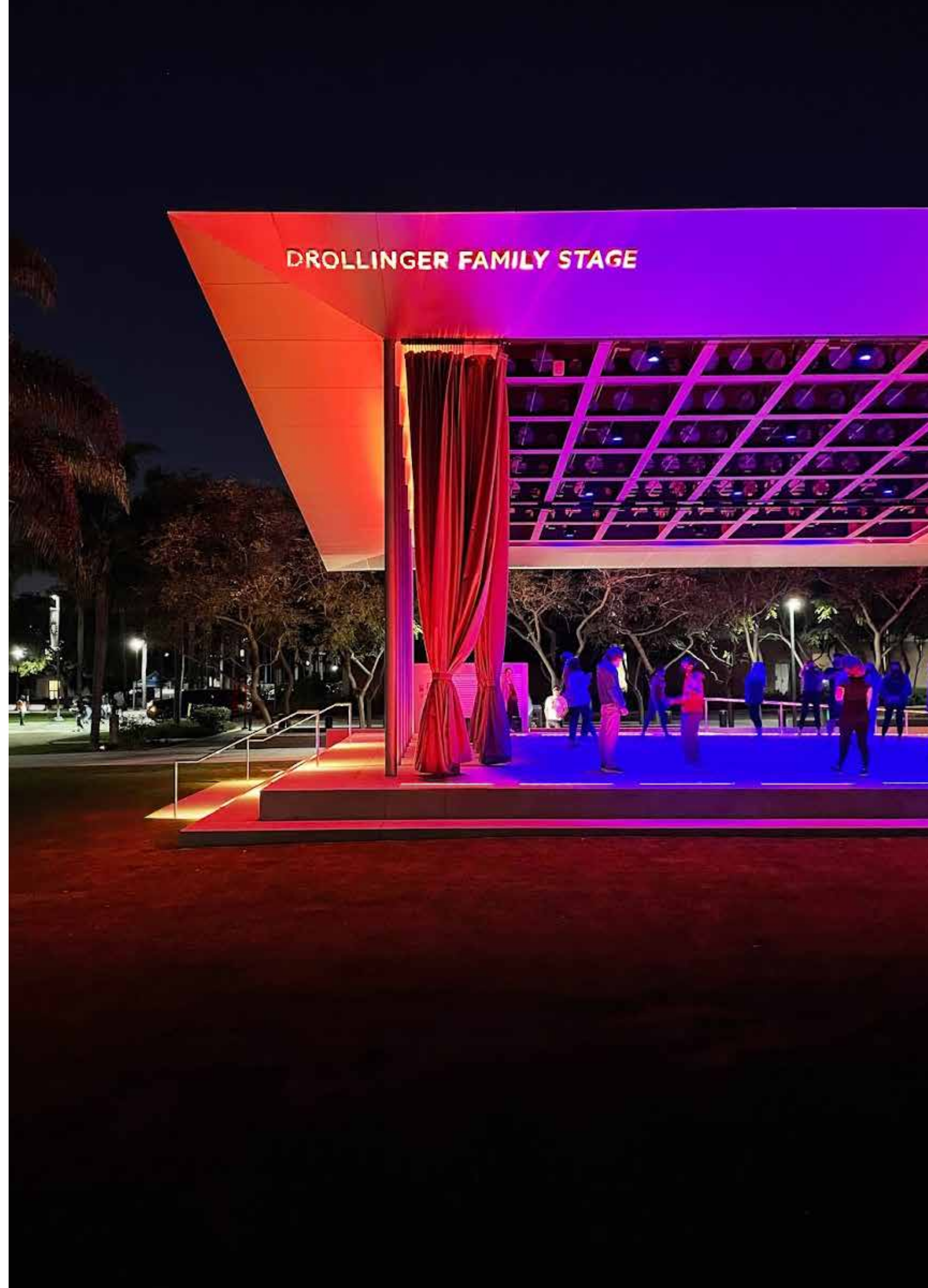
Grazing WW

Colour temperature



RGBW





RGBW QUAD CHIP VERSIONS

The Jedi Compact Outdoor range is available with new RGBW quad chip light sources, both in projector and recessed versions. The quad-chip LED technology that equips the fixtures allows perfect color blending right from the source, resulting in a high-quality, uniform, and homogeneous effect for complete colour mixing the emitted light is eliminated.

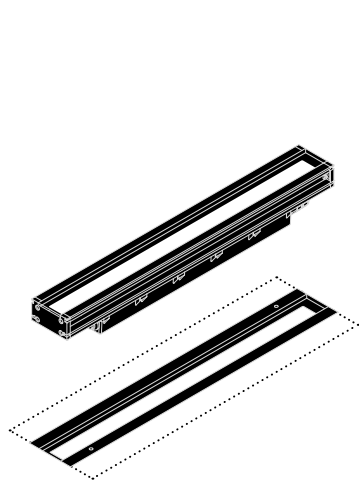


Quad chip RGBW LED



The color mixing of RGBW fixtures is managed via DMX RDM drivers.

JEDI



Optics



LED
Power



Fixture
Power



Source
Flux



Fixture
Flux

600mm

Spot	23W	28W	1947lm	1560lm
Flood	12W	15W	1720lm	1285lm
Flood	24W	18W	3420lm	2555lm
Grazing	12W	15W	1720lm	1481lm
Grazing	24W	28W	3420lm	2961lm
Wall Washer	12W	15W	1720lm	1239lm
Wall Washer	24W	28W	3420lm	2572lm

900mm

Spot	34W	40W	2922lm	2341lm
Flood	18W	22W	2580lm	1927lm
Flood	36W	40W	5130lm	3833lm
Grazing	18W	22W	2580lm	2222lm
Grazing	36W	40W	5130lm	4441lm
Wall Washer	18W	22W	2580lm	1940lm
Wall Washer	36W	40W	5130lm	3858lm

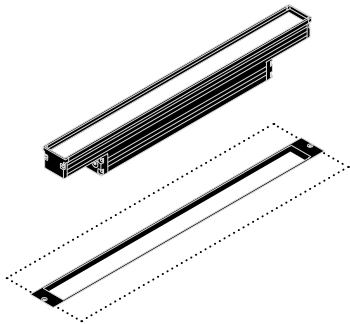
1200mm

Spot	46W	51W	3894lm	3120lm
Flood	24W	28W	3440lm	2570lm
Flood	48W	53W	6840lm	5111lm
Grazing	24W	28W	3440lm	2963lm
Grazing	48W	53W	6840lm	5922lm
Wall Washer	24W	28W	3440lm	2587lm
Wall Washer	48W	53W	6840lm	5143lm

The lumen output refers to LED 3000K.

*For data related to the RGBW versions, refer to our website.

JEDI COMPACT



Optics



LED
Power



Fixture
Power



Source
Flux



Fixture
Flux

300mm

Spot	12W	12W	1554lm	1288lm
Flood	12W	12W	1720lm	1285lm
Flood + Louvre	12W	12W	1720lm	752lm
Grazing	12W	12W	1720lm	1492lm
Grazing + Louvre	12W	12W	1720lm	912lm
Wall Washer	12W	12W	1720lm	1293lm
Wall Washer + Louvre	12W	12W	1720lm	975lm

600mm

Spot	23W	26W	3018lm	2501lm
Flood	24W	28W	3440lm	2570lm
Flood + Louvre	24W	28W	3440lm	1503lm
Grazing	24W	28W	3440lm	2858lm
Grazing + Louvre	24W	28W	3440lm	1824lm
Wall Washer	24W	28W	3440lm	2586lm
Wall Washer + Louvre	24W	28W	3440lm	1950lm

900mm

Spot	35W	38W	4662lm	3863lm
Flood	36W	40W	5160lm	3856lm
Flood + Louvre	36W	40W	5160lm	2255lm
Grazing	36W	40W	5160lm	4288lm
Grazing + Louvre	36W	40W	5160lm	2735lm
Wall Washer	36W	40W	5160lm	3879lm
Wall Washer + Louvre	36W	40W	5160lm	2926lm

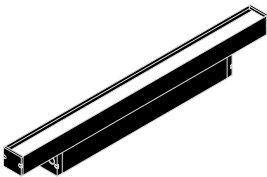
1200mm

Spot	46W	51W	6216lm	5151lm
Flood	48W	53W	6880lm	5141lm
Flood + Louvre	48W	53W	6880lm	3007lm
Grazing	48W	53W	6880lm	5717lm
Grazing + Louvre	48W	53W	6880lm	3646lm
Wall Washer	48W	53W	6880lm	5172lm
Wall Washer + Louvre	48W	53W	6880lm	3901lm

The lumen output refers to LED 3000K.

*For data related to the RGBW versions, refer to our website.

JEDI COMPACT INDOOR



Optics



LED
Power



Fixture
Power



Source
Flux



Fixture
Flux

300mm size

Spot	12W	12W	1413lm	1171lm
Flood	12W	12W	1500lm	1293lm
Grazing	12W	12W	1500lm	1247lm
Wall Washer	12W	12W	1500lm	1128lm

600mm size

Spot	23W	26W	2826lm	2341lm
Flood	24W	28W	3000lm	2242lm
Grazing	24W	28W	3000lm	2495lm
Wall Washer	24W	28W	3000lm	2256lm

900mm size

Spot	35W	38W	4238lm	3511lm
Flood	36W	40W	4500lm	3361lm
Grazing	36W	40W	4500lm	3740lm
Wall Washer	36W	40W	4500lm	3384lm

1200mm size

Spot	46W	51W	5651lm	4682lm
Flood	48W	53W	6000lm	4482lm
Grazing	48W	53W	6000lm	4987lm
Wall Washer	48W	53W	6000lm	4512lm

The lumen output refers to LED 3000K.



Targetti Sankey S.r.l.

Via Pratese 164
50145 Firenze, Italia

Phone 055 37911
Fax 055 3791 266
targetti@targetti.com
www.targetti.com

Customer Care
customer@targetti.com

Customer Service
technical@targetti.com

Lighting Consulting
project@targetti.com

Graphic design
Marketing division